

Anti-Albumin/ALB Antibody

Catalog Number: A01245-4

About ALB

Albumin is the most abundant protein in blood plasma. Alterations of level of serum albumin are linked to variety of diseases. Albumin is expressed exclusively by well-differentiated hepatocytes, thus anti-albumin has been used to mark hepatocytes. In addition, glycosylated serum albumin is also a potential diabetes biomarker. The N-terminal 24aa of albumin will be cleaved to generate the mature form of serum albumin with MW 66 kDa. (21388516, 23832071)

Overview

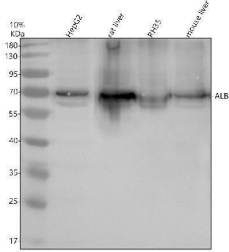
Product Name	Anti-Albumin/ALB Antibody
Reactive Species	Human, Mouse, Rat
Description	Boster Bio Anti-Albumin/ALB Antibody catalog # A01245-4. Tested in WB, IHC, IF, ICC, IP, ELISA applications. This antibody reacts with Human, Mouse, Rat.
Application	ELISA, IP, IF, IHC, ICC, WB
Clonality	Polyclonal
Formulation	500 ug/ml antibody with PBS, 0.02% NaN ₃ , 1 mg stabilizing protein and 50% glycerol *This antibody is supplied in a stabilized formulation. Compatibility with conjugation reactions depends on the chemistry of the conjugation method used. For conjugation methods that are not compatible with the stabilizing components present in this formulation, a carrier-free antibody format is required.
Storage Instructions	12 months from date of receipt at -20°C as supplied. 6 months 2 to 8°C after reconstitution. Avoid repeated freezing and thawing.
Host	Rabbit
Uniprot ID	P02768

Technical Details

Immunogen	E.coli-derived human Albumin/ALB recombinant protein (Position: L258-L607).
Form	Liquid
Concentration	500 ug/ml
Purification	Immunogen affinity purified.
Suggested Dilutions	Western blot, 1:500-2000 Immunohistochemistry, 1:50-400 Immunofluorescence, 1:50-400 Immunocytochemistry/Immunofluorescence, 1:50-400

	ImmunoPrecipitation, 1:250-300 ELISA, 1:100-1000
--	---

Anti-Albumin/ALB Antibody (A01245-4) Images



Western blot analysis of ALB using anti-ALB antibody (A01245-4). Electrophoresis was performed on a 10% SDS-PAGE gel at 80V (Stacking gel) / 120V (Resolving gel) for 2 hours. The sample well of each lane was loaded with 30 ug of sample under reducing conditions. Lane 1: human HepG2 whole cell lysates, Lane 2: rat liver tissue lysates, Lane 3: rat RH35 whole cell lysates, Lane 4: mouse liver tissue lysates. After electrophoresis, proteins were transferred to a nitrocellulose membrane at 150 mA for 50-90 minutes. Blocked the membrane with 5% non-fat milk/TBS for 1.5 hour at RT. The membrane was incubated with rabbit anti-ALB antigen affinity purified polyclonal antibody (A01245-4) at 1:1000 overnight at 4°C, then washed with TBS-0.1% Tween 3 times with 5 minutes each and probed with a goat anti-rabbit IgG-HRP secondary antibody at a dilution of 1:5000 for 1.5 hour at RT. The signal is developed using an ECL Plus Western Blotting Substrate (Catalog # AR1196-200) with Tanon 5200 system. A specific band was detected for ALB at approximately 69 kDa. The expected band size for ALB is at 69 kDa.

Submit a product review to Biocompare.com

Submit a review of this product to Biocompare.com to receive a \$20 Amazon.com giftcard! Your reviews help your fellow scientists make the right decisions. Thank you for your contribution.



Anti-Albumin/ALB Antibody

For Research Use Only. Not for use in diagnostic procedures.