

## Anti-Occludin OCLN Antibody

Catalog Number: A01246

### About OCLN

Tight junctions act as a semi-permeable barrier to the transport of ions, solutes, and water and are considered to function as a fence that divides apical and basolateral domains of plasma membranes. Tight junctions coordinate a variety of signaling and trafficking molecules regulating cell differentiation, proliferation, and polarity and contain a number of junctional proteins including Occludin, Claudins, junctional adhesion molecules (JAMs), as well as multiple scaffold proteins. Occludin, the first identified component of tight junction strands, is thought function as a signal transmitter in multiple signaling pathways and can associate with multiple kinases and phosphatases such as PI3-kinase and protein phosphatases 1 and 2A. At least two isoforms of OCLN are known to exist.

### Overview

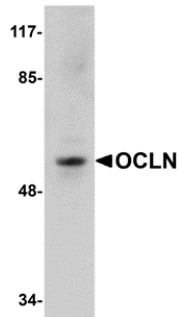
Product Name	Anti-Occludin OCLN Antibody
Reactive Species	Human, Mouse, Rat
Description	Boster Bio Anti-Occludin OCLN Antibody (Catalog # A01246). Tested in ELISA, WB, IHC-P, IF applications. This antibody reacts with Human, Mouse, Rat.
Application	ELISA, IF, IHC-P, WB
Clonality	Polyclonal
Formulation	OCLN Antibody is supplied in PBS containing 0.02% sodium azide.
Storage Instructions	Antibody can be stored at 4°C up to one year. Antibodies should not be exposed to prolonged high temperatures.
Host	Rabbit
Uniprot ID	Q16625

### Technical Details

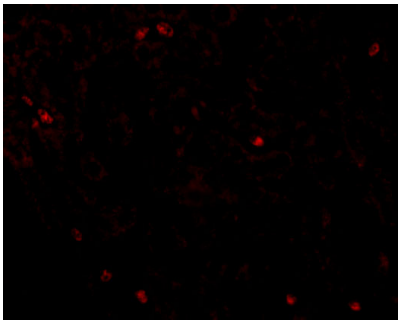
Immunogen	OCLN antibody was raised against a 15 amino acid synthetic peptide from near the carboxy terminus of human OCLN. The immunogen is located within the last 50 amino acids of OCLN.
Predicted Reactive Species	Bovine, Rat
Cross Reactivity	At least three isoforms of OCLN are known to exist.
Isotype	IgG
Form	Liquid
Concentration	1 mg/mL

Purification	OCLN Antibody is affinity chromatography purified via peptide column.
Suggested Dilutions	OCLN antibody can be used for detection of OCLN by Western blot at 1 ug/mL. Antibody can also be used for immunohistochemistry starting at 2.5 ug/mL. For immunofluorescence start at 20 ug/mL. Antibody validated: Western Blot in human samples; Immunohistochemistry in human and mouse samples and Immunofluorescence in human and mouse samples. All other applications and species not yet tested. Optimal dilutions for each application should be determined by the researcher.

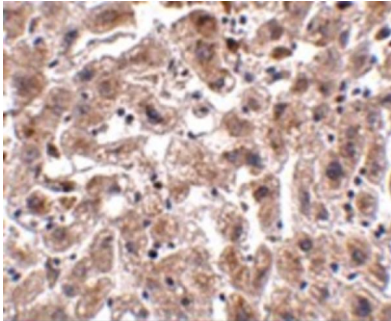
## Anti-Occludin OCLN Antibody (A01246) Images



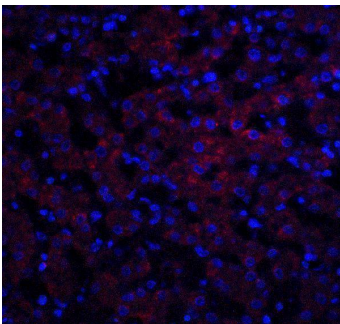
Western blot analysis of OCLN in human liver tissue lysate with OCLN antibody at 1 ug/mL.



Immunofluorescence of OCLN in Human Liver tissue with OCLN antibody at 20 ug/mL.

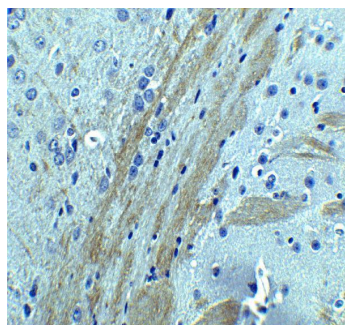
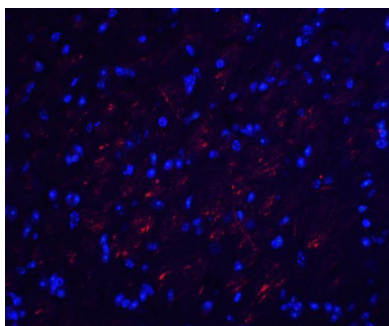


Immunohistochemistry of OCLN in human liver tissue with OCLN antibody at 2.5 ug/mL.

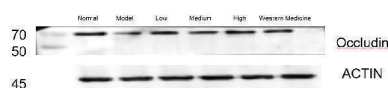


Immunofluorescence of OCLN in human liver tissue with OCLN antibody at 20 ug/ml. Red: OCLN Antibody (A01246)  
Blue: DAPI staining

Immunofluorescence of OCLN in mouse brain tissue with OCLN antibody at 20 ug/mL. Red: OCLN Antibody (A01246)  
Blue: DAPI staining



Immunohistochemistry of OCLN in mouse brain tissue with OCLN Antibody at 5 ug/mL.



Western blot analysis of OCLN using anti-OCLN antibody (A01246). Electrophoresis was performed on a 10% SDS-PAGE gel at 80V (Stacking gel) / 120V (Resolving gel) for 2 hours. The sample well of each lane was loaded with 30 ug of sample under reducing conditions. Lane 1: Normal group-rat colon tissue, Lane 2: Model group-colon tissue from model rats, Lane 3: Low dose group-colon tissue from model rats, Lane 4: Medium dose group-colon tissue from model rats, Lane 5: High dose group-colon tissue from model rats, Lane 6: Western medicine treated-colon tissue from model rats. After electrophoresis, proteins were transferred to a nitrocellulose membrane at 150 mA for 50-90 minutes. Blocked the membrane with 5% non-fat milk/TBS for 1.5 hour at RT. The membrane was incubated with rabbit anti-OCLN antigen affinity purified monoclonal antibody (A01246) at 1:1000 overnight at 4°C, then washed with TBS-0.1%Tween 3 times with 5 minutes each and probed with a HRP Conjugated AffiniPure Goat Anti-rabbit IgG (H+L) at a dilution of 1:5000 for 1 hour at RT. The signal is developed using an ECL Plus Western Blotting Substrate (Catalog # AR1196-200) with ChemiDoc MP system. A specific band was detected for OCLN at approximately 68 kDa. The expected band size for OCLN is at 59.1 kDa.

## 5 Publications Citing This Product

1. PubMed ID: -, Qing-qing Zhang, Ye Yang, Rong-rong Ren, Qing-qing Chen, Jing-jing Wu, Yu-yu Zheng, Xiao-hui Hou, Yu-feng Zhang, Ming-song Xue, Deng-ke Yin, Self-assembled aggregations in *Coptis chinensis* decoction dynamically regulate intestinal tissue permeability through peyer's patch-associated immunity, *Chinese Herbal Medicines*, 2021,, ISSN 1674-6384, <https://doi.org/10.1016/j.chmed.2021.06.004>.

2. PubMed ID: -, Xiaozhu Tian, Rong Li, Yiming Jiang, Fei Zhao, Zhengsheng Yu, Yiqing Wang, Zixing Dong, Pu Liu, Xiangkai Li, *Bifidobacterium breve* ATCC15700 pretreatment prevents alcoholic liver disease through modulating gut microbiota in mice exposed to chronic alcohol intake, *J*

3. PubMed ID: -, Xin-li Liang, Miao-miao Ji, Lai Chen, Ye Liao, Xiao-qiang Kong, Xi-qiang Xu, Zheng-gen Liao, Danny W. Wilson, Traditional Chinese herbal medicine Astragalus Radix and its effects on intestinal absorption of aconite alkaloids in rats, Chinese Herbal Medicines, 202

Visit [bosterbio.com/anti-occludin-ocln-antibody-a01246-boster.html](http://bosterbio.com/anti-occludin-ocln-antibody-a01246-boster.html) to see all 5 publications.

## Submit a product review to Biocompare.com

Submit a review of this product to Biocompare.com to receive a \$20 Amazon.com giftcard! Your reviews help your fellow scientists make the right decisions. Thank you for your contribution.



Anti-Occludin OCLN Antibody

For Research Use Only. Not for use in diagnostic procedures.