

## Anti-SUMO2/3 Antibody

Catalog Number: A01282-1

### About SUMO2

Small ubiquitin-like modifiers (SUMOs) are a family of small, related proteins (Sumo-1/2/3/4) that can be enzymatically attached to a target protein by a post-translational modification process termed sumoylation, which is a major regulator of protein function in cellular processes such as nuclear transport, transcriptional regulation, apoptosis and protein stability. All SUMO proteins localize to the nucleus and are covalently conjugated, affecting protein structure, function and interactions. SUMO2 and 3 are 96% identical and are more mobile within nucleus relative to SUMO1. Specific functional differences between SUMO1 and SUMO2 and 3 remain to be identified.

### Overview

Product Name	Anti-SUMO2/3 Antibody
Reactive Species	Human, Mouse, Rat
Description	Boster Bio Anti-SUMO2/3 Antibody (Catalog # A01282-1). Tested in ELISA, WB, IHC-P, IF applications. This antibody reacts with Human, Mouse, Rat.
Application	ELISA, IF, IHC-P, WB
Clonality	Polyclonal
Formulation	SUMO2/3 Antibody is supplied in PBS containing 0.02% sodium azide.
Storage Instructions	SUMO2/3 antibody can be stored at 4°C up to one year. Antibodies should not be exposed to prolonged high temperatures.
Host	Rabbit
Uniprot ID	P61956

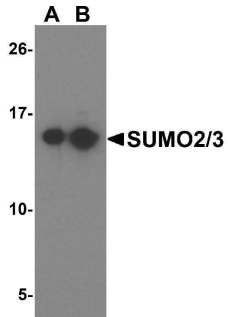
### Technical Details

Immunogen	SUMO2/3 antibody was raised against a 15 amino acid synthetic peptide near the carboxy terminus of human SUMO2. The immunogen is located within the last 50 amino acids of SUMO2/3.
Predicted Reactive Species	Bovine, Chicken, Pig
Isotype	IgG
Form	Liquid
Concentration	1 mg/mL
Purification	SUMO2/3 Antibody is affinity chromatography purified via peptide column.
Suggested Dilutions	SUMO2/3 antibody can be used for detection of SUMO2 and SUMO3 by Western blot at 1 - 2 ug/mL. Antibody can also be used for immunohistochemistry starting at 5 ug/mL. For

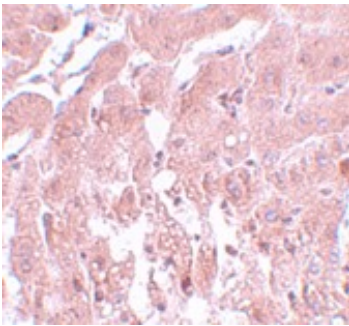
immunofluorescence start at 20 ug/mL.

Antibody validated: Western Blot in human samples; Immunohistochemistry in rat samples and Immunofluorescence in rat samples. All other applications and species not yet tested. Optimal dilutions for each application should be determined by the researcher.

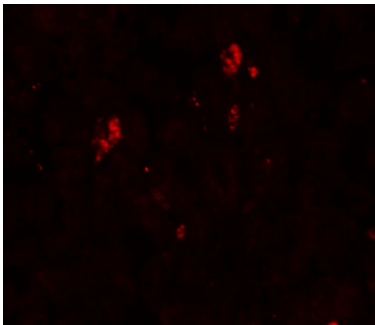
## Anti-SUMO2/3 Antibody (A01282-1) Images



Western blot analysis of SUMO2/3 in Jurkat cell lysate with SUMO2/3 antibody at (A) 1 and (B) 2 ug/mL.



Immunohistochemistry of SUMO2/3 in rat liver tissue with SUMO2/3 antibody at 5 ug/mL.



Immunofluorescence of SUMO2/3 in rat liver tissue with SUMO2/3 antibody at 20 ug/mL.

### Submit a product review to [Biocompare.com](https://www.biocompare.com)

Submit a review of this product to [Biocompare.com](https://www.biocompare.com) to receive a \$20 Amazon.com giftcard! Your reviews help your fellow scientists make the right decisions. Thank you for your contribution.



Anti-SUMO2/3 Antibody

For Research Use Only. Not for use in diagnostic procedures.