

Anti-Chitinase-3-like protein 1 CHI3L1 Antibody

Catalog Number: A01283

About CHI3L1

Key calcium ion sensor involved in the Ca²⁺-triggered synaptic vesicle-plasma membrane fusion. Plays a role in the sarcolemma repair mechanism of both skeletal muscle and cardiomyocytes that permits rapid resealing of membranes disrupted by mechanical stress By similarity.

Delia J. Hernández-Deviez, Hum. Mol. Genet., Jan 2006; 15: 129 - 142.

Yanchao Huang, FASEB J, Mar 2007; 21: 732 - 742.

Mengfatt Ho, Hum. Mol. Genet., Sep 2004; 13: 1999 - 2010.

Eriko Fujita, Hum. Mol. Genet., Mar 2007; 16: 618 - 629.

Overview

| | |
|----------------------|--|
| Product Name | Anti-Chitinase-3-like protein 1 CHI3L1 Antibody |
| Reactive Species | Human, Mouse, Rat |
| Description | Boster Bio Anti-Chitinase-3-like protein 1 CHI3L1 Antibody catalog # A01283. Tested in WB applications. This antibody reacts with Human,Mouse,Rat. |
| Application | WB |
| Clonality | Polyclonal |
| Formulation | Rabbit IgG, 1mg/ml in PBS with 0.02% sodium azide, 50% glycerol, pH7.2 |
| Storage Instructions | Store at -20°C for one year. For short term storage and frequent use, store at 4°C for up to one month. Avoid repeated freeze-thaw cycles. |
| Host | Rabbit |
| Uniprot ID | P36222 |

Technical Details

| | |
|----------------------------|---|
| Immunogen | Synthesized peptide derived from human Tie-2 around the phosphorylation site of Y992. |
| Predicted Reactive Species | Boar, Bovine, Canine, Golden Hamster |
| Cross Reactivity | No cross reactivity with other proteins. |
| Isotype | IgG |
| Form | Liquid |
| Concentration | 1 mg/ml |

| | |
|---------------------|---|
| Purification | The antibody was affinity-purified from rabbit antiserum by affinity-chromatography using epitope-specific immunogen and the purity is > 95% (by SDS-PAGE). |
| Suggested Dilutions | <p>Dilute the sample so that the expected range of concentrations fall within the detection range of this kit.</p> <p>If the expected range of concentration is unknown, a pilot test should be conducted to decide the optimal dilution ratio for your samples.</p> <p>Some PubMed article(s) citing the expression level of this target are as follows:</p> <p>Boster Bio's internal QC testing used:</p> <p>WB: 1:500-1:1000</p> |

Anti-Chitinase-3-like protein 1 CHI3L1 Antibody (A01283) Images

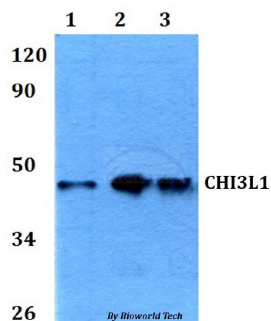


Figure 1. Western blotting validation for Anti-Chitinase-3-like protein 1 CHI3L1 Antibody A01283

Western blot (WB) analysis of CHI3L1 polyclonal antibody at 1:500 dilution

Lane1:HEK293T whole cell lysate

Lane2:Raw264.7 whole cell lysate

Lane3:H9C2 whole cell lysate

Electrophoresis was performed on a SDS-PAGE gel. To determine SDS-PAGE gel concentration

Submit a product review to Biocompare.com

Submit a review of this product to Biocompare.com to receive a \$20 Amazon.com giftcard! Your reviews help your fellow scientists make the right decisions. Thank you for your contribution.



Anti-Chitinase-3-like protein 1 CHI3L1 Antibody