

Anti-PKC Theta (phospho-S676) PRKCQ Antibody

Catalog Number: A01293S676

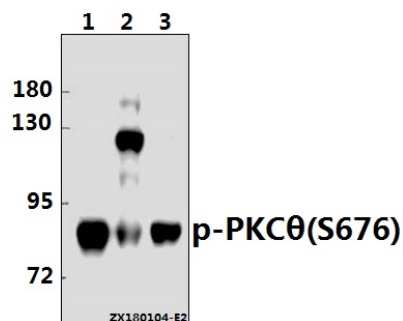
Overview

Product Name	Anti-PKC Theta (phospho-S676) PRKCQ Antibody
Reactive Species	Human, Mouse, Rat
Description	Boster Bio Anti-PKC Theta (phospho-S676) PRKCQ Antibody catalog # A01293S676. Tested in WB,IHC,IF applications. This antibody reacts with Human,Mouse,Rat.
Application	IF, IHC, WB
Clonality	Polyclonal
Formulation	Rabbit IgG, 1mg/ml in PBS with 0.02% sodium azide, 50% glycerol, pH7.2
Storage Instructions	Store at -20°C for one year. For short term storage and frequent use, store at 4°C for up to one month. Avoid repeated freeze-thaw cycles.
Host	Rabbit
Uniprot ID	Q04759

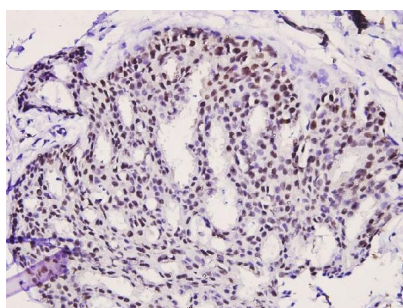
Technical Details

Immunogen	Synthetic phosphopeptide derived from human PKC theta around the phosphorylation site of Serine 676.
Cross Reactivity	No cross reactivity with other proteins.
Isotype	IgG
Form	Liquid
Concentration	1 mg/ml
Purification	The antibody was affinity-purified from rabbit antiserum by affinity-chromatography using epitope-specific immunogen and the purity is > 95% (by SDS-PAGE).
Suggested Dilutions	WB: 1:500-1:1000 IHC: 1:50-1:200 IF: 1:50-1:200

Anti-PKC Theta (phospho-S676) PRKCQ Antibody (A01293S676) Images



Western blot (WB) analysis of p-PKC theta (S676) pAb at 1:500 dilution Lane1:The Spleen tissue lysate of Mouse(40ug) Lane2:K562 whole cell lysate(40ug) Lane3:The Thymus tissue lysate of Rat(40ug)



Immunohistochemistry (IHC) analyzes of p-PKC theta (S676) pAb in paraffin-embedded human breast carcinoma tissue at 1:100.

Submit a product review to Biocompare.com

Submit a review of this product to Biocompare.com to receive a \$20 Amazon.com giftcard! Your reviews help your fellow scientists make the right decisions. Thank you for your contribution.



Anti-PKC Theta (phospho-S676) PRKCQ Antibody

For Research Use Only. Not for use in diagnostic procedures.