

Anti-CRF-RI (H177) CRHR1 Antibody

Catalog Number: A01298

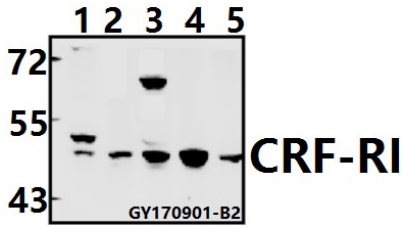
Overview

Product Name	Anti-CRF-RI (H177) CRHR1 Antibody
Reactive Species	Human, Mouse, Rat
Description	Boster Bio Anti-CRF-RI (H177) CRHR1 Antibody catalog # A01298. Tested in WB,IHC,IF applications. This antibody reacts with Human,Mouse,Rat.
Application	IF, IHC, WB
Clonality	Polyclonal
Formulation	Rabbit IgG, 1mg/ml in PBS with 0.02% sodium azide, 50% glycerol, pH7.2
Storage Instructions	Store at -20°C for one year. For short term storage and frequent use, store at 4°C for up to one month. Avoid repeated freeze-thaw cycles.
Host	Rabbit
Uniprot ID	P34998

Technical Details

Immunogen	Synthetic peptide, corresponding to amino acids 150-200 of Human CRF-RI.
Cross Reactivity	No cross reactivity with other proteins.
Isotype	IgG
Form	Liquid
Concentration	1 mg/ml
Purification	The antibody was affinity-purified from rabbit antiserum by affinity-chromatography using epitope-specific immunogen and the purity is > 95% (by SDS-PAGE).
Suggested Dilutions	WB: 1:500-1:1000 IHC: 1:50-1:200 IF: 1:50-1:200

Anti-CRF-RI (H177) CRHR1 Antibody (A01298) Images



Western blot (WB) analysis of CRF-RI (H177) pAb at 1:1000 dilution Lane1:L02 whole cell lysate(20ug) Lane2:MCF-7 whole cell lysate(20ug) Lane3:A549 whole cell lysate(40ug) Lane4:C6 whole cell lysate(40ug) Lane5:BV2 whole cell lysate(40ug)

1 Publications Citing This Product

1. PubMed ID: 10.1111/j.1476-5381.2009.00210.x, Urocortin promotes the development of vasculitis in a rat model of thromboangiitis obliterans via corticotrophin-releasing factor type 1 receptors

Visit bosterbio.com/anti-crf-ri-h177-crhr1-antibody-a01298-boster.html to see all 1 publications.

Submit a product review to Biocompare.com

Submit a review of this product to Biocompare.com to receive a \$20 Amazon.com giftcard! Your reviews help your fellow scientists make the right decisions. Thank you for your contribution.



Anti-CRF-RI (H177) CRHR1 Antibody

For Research Use Only. Not for use in diagnostic procedures.