

## Anti-RXRA (phospho-S260) Antibody

Catalog Number: A01299S260

### Overview

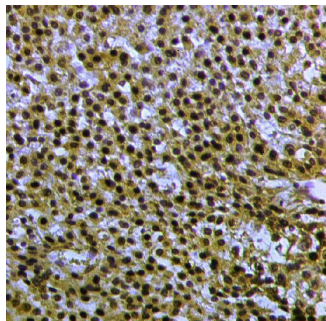
Product Name	Anti-RXRA (phospho-S260) Antibody
Reactive Species	Human
Description	Boster Bio Anti-RXRA (phospho-S260) Antibody catalog # A01299S260. Tested in IHC applications. This antibody reacts with Human.
Application	IHC
Clonality	Polyclonal
Formulation	Rabbit IgG, 1mg/ml in PBS with 0.02% sodium azide, 50% glycerol, pH7.2
Storage Instructions	Store at -20°C for one year. For short term storage and frequent use, store at 4°C for up to one month. Avoid repeated freeze-thaw cycles.
Host	Rabbit
Uniprot ID	P19793

### Technical Details

Immunogen	Synthetic phosphopeptide derived from human RXRA around the phosphorylation site of Ser260.
Cross Reactivity	No cross reactivity with other proteins.
Isotype	IgG
Form	Liquid
Concentration	1 mg/ml
Purification	The antibody was affinity-purified from rabbit antiserum by affinity-chromatography using epitope-specific immunogen and the purity is > 95% (by SDS-PAGE).
Suggested Dilutions	IHC: 1:50-1:200

## Anti-RXRA (phospho-S260) Antibody (A01299S260) Images

---



Immunohistochemistry (IHC) analyzes of RXRA (phospho-S260) polyclonal antibody in paraffin-embedded human liver cancer tissue at 1:50.

---

### Submit a product review to Biocompare.com

Submit a review of this product to Biocompare.com to receive a \$20 Amazon.com giftcard! Your reviews help your fellow scientists make the right decisions. Thank you for your contribution.



Anti-RXRA (phospho-S260) Antibody

For Research Use Only. Not for use in diagnostic procedures.