

Anti-Elastin ELN Antibody

Catalog Number: A01300

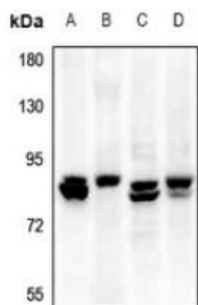
Overview

Product Name	Anti-Elastin ELN Antibody
Reactive Species	Human, Mouse, Rat
Description	Boster Bio Anti-Elastin ELN Antibody catalog # A01300. Tested in WB applications. This antibody reacts with Human,Mouse,Rat.
Application	WB
Clonality	Polyclonal
Formulation	Rabbit IgG, 1mg/ml in PBS with 0.02% sodium azide, 50% glycerol, pH7.2
Storage Instructions	Store at -20°C for one year. For short term storage and frequent use, store at 4°C for up to one month. Avoid repeated freeze-thaw cycles.
Host	Rabbit
Uniprot ID	P15502

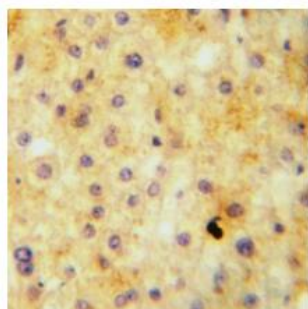
Technical Details

Immunogen	KLH-conjugated synthetic peptide encompassing a sequence within the center region of human ELN.
Cross Reactivity	No cross reactivity with other proteins.
Isotype	IgG
Form	Liquid
Concentration	1 mg/ml
Purification	The antibody was affinity-purified from rabbit antiserum by affinity-chromatography using epitope-specific immunogen and the purity is > 95% (by SDS-PAGE).
Suggested Dilutions	WB: 1:500-1:1000

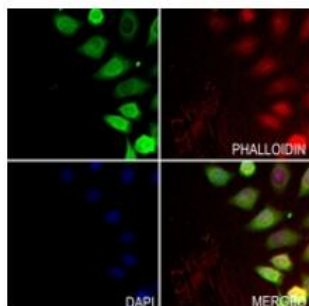
Anti-Elastin ELN Antibody (A01300) Images



Western blot analysis of ELN expression in rat lung (A), mouse lung (B), A375 (C), A549 (D) whole cell lysates.



Immunohistochemical analysis of ELN staining in human liver cancer formalin fixed paraffin embedded tissue section.



Immunofluorescent analysis of ELN staining in A549 cells.

Submit a product review to [Biocompare.com](https://www.biocompare.com)

Submit a review of this product to [Biocompare.com](https://www.biocompare.com) to receive a \$20 Amazon.com giftcard! Your reviews help your fellow scientists make the right decisions. Thank you for your contribution.



Anti-Elastin ELN Antibody

For Research Use Only. Not for use in diagnostic procedures.