

Anti-Zinc transporter 8 SLC30A8 Antibody

Catalog Number: A01310

About SLC30A8

SLC30A8 is a zinc efflux transporter involved in the accumulation of zinc in intracellular vesicles and is expressed at a high level in the pancreas, particularly in islets of Langerhans, and co-localizes with insulin in the secretory pathway granules of the insulin-secreting INS-1 cells (1). Allelic variants of SLC30A8 have been identified as major genetic risk factors for the development of Type 2 diabetes (2), but no genetic association has been found with Type 1 diabetes (3). SLC30A8 expression in β -cells was found to be influenced by cytokine expression, particularly IFN-gamma and IL-1beta (4).

Overview

Product Name	Anti-Zinc transporter 8 SLC30A8 Antibody
Reactive Species	Human
Description	Boster Bio Anti-Zinc transporter 8 SLC30A8 Antibody (Catalog # A01310). Tested in ELISA, WB, IHC-P, IF applications. This antibody reacts with Human.
Application	ELISA, IF, IHC-P, WB
Clonality	Polyclonal
Formulation	SLC30A8 Antibody is supplied in PBS containing 0.02% sodium azide.
Storage Instructions	SLC30A8 antibody can be stored at 4°C for three months and -20°C, stable for up to one year. Avoid repeated freeze-thaw cycles. Antibodies should not be exposed to prolonged high temperatures.
Host	Rabbit
Uniprot ID	Q8IWU4

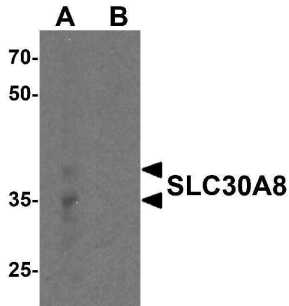
Technical Details

Immunogen	SLC30A8 antibody was raised against a peptide corresponding to 14 amino acids near the amino terminus of human SLC30A8.
Predicted Reactive Species	Rat
Cross Reactivity	Two isoforms of SLC30A8 are known to exist; this antibody will detect both isoforms. This SLC30A8 antibody is predicted to not cross-react with other members of the SLC30 protein family.
Isotype	IgG
Form	Liquid
Concentration	1 mg/mL
Purification	SLC30A8 Antibody is affinity chromatography purified via peptide column.

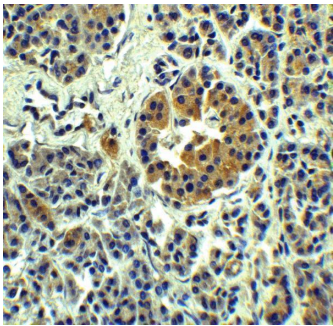
Suggested Dilutions

SLC30A8 antibody can be used for Western blot at 1 - 2 ug/mL. Antibody can also be used for Immunohistochemistry starting at 10 ug/mL. For immunofluorescence start at 20 ug/mL. Antibody validated: Western Blot in human samples; Immunohistochemistry in human samples and Immunofluorescence in human samples. All other applications and species not yet tested. Optimal dilutions for each application should be determined by the researcher.

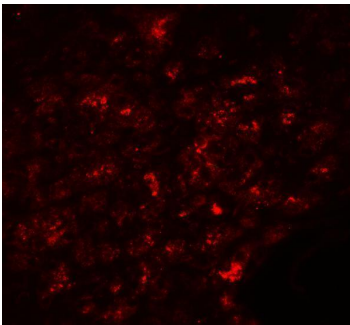
Anti-Zinc transporter 8 SLC30A8 Antibody (A01310) Images



Western blot analysis of SLC30A8 in human pancreas tissue lysate with SLC30A8 antibody at 1 ug/ml in (A) the absence and (B) the presence of blocking peptide



Immunohistochemistry of SLC30A8 in human pancreas tissue with SLC30A8 Antibody at 5 ug/mL.



Immunofluorescence of SLC30A8 in human pancreas tissue with SLC30A8 Antibody at 20 ug/mL.

Submit a product review to [Biocompare.com](https://www.biocompare.com)

Submit a review of this product to [Biocompare.com](https://www.biocompare.com) to receive a \$20 Amazon.com giftcard! Your reviews help your fellow scientists make the right decisions. Thank you for your contribution.



Anti-Zinc transporter 8 SLC30A8 Antibody

For Research Use Only. Not for use in diagnostic procedures.