

Anti-Golgi phosphoprotein 3 GOLPH3 Antibody

Catalog Number: A01333

About GOLPH3

GOLPH3 was initially identified as a peripheral membrane protein localized to the trans-Golgi network, but others reported it to be primarily a mitochondrial protein that regulated the mitochondrial mass through the regulation of the mitochondria-specific phospholipid cardiolipin. GOLPH3 has since been implicated in the target of rapamycin (TOR) signalling pathway. Its overexpression in transfected cells led to and increase in anchorage-independent growth and cell proliferation in vitro. Furthermore, GOLPH3-transfected cells enhanced S6 Kinase activity in response to growth factor stimulation by EGF. Simultaneously, AKT phosphorylation increased in these cells, while these events were abrogated in GOLPH3 siRNA treated cells compared to control cells, indicating the GOLPH3 can enhance signalling through TOR-associated complexes. These results suggest that GOLPH3 is a bona fide oncogene and may be a useful target for therapeutic strategies.

Overview

Product Name	Anti-Golgi phosphoprotein 3 GOLPH3 Antibody
Reactive Species	Human, Mouse, Rat
Description	Boster Bio Anti-Golgi phosphoprotein 3 GOLPH3 Antibody (Catalog # A01333). Tested in ELISA, WB, IF applications. This antibody reacts with Human, Mouse, Rat.
Application	ELISA, IF, WB
Clonality	Polyclonal
Formulation	GOLPH3 Antibody is supplied in PBS containing 0.02% sodium azide.
Storage Instructions	GOLPH3 antibody can be stored at 4°C for three months and -20°C, stable for up to one year. Avoid repeated freeze-thaw cycles. Antibodies should not be exposed to prolonged high temperatures.
Host	Rabbit
Uniprot ID	Q9H4A6

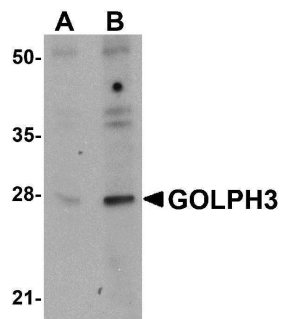
Technical Details

Immunogen	GOLPH3 antibody was raised against a 14 amino acid synthetic peptide from near the amino terminus of human GOLPH3. The immunogen is located within the first 50 amino acids of GOLPH3.
Predicted Reactive Species	Rat
Isotype	IgG
Form	Liquid
Concentration	1 mg/mL
Purification	GOLPH3 Antibody is affinity chromatography purified via peptide column.

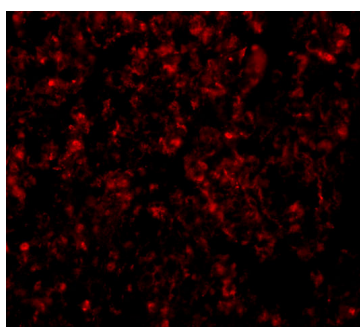
Suggested Dilutions

GOLPH3 antibody can be used for detection of GOLPH3 by Western blot at 0.5 - 1 ug/mL. For immunofluorescence start at 20 ug/mL.
Antibody validated: Western Blot in rat samples and Immunofluorescence in rat samples. All other applications and species not yet tested. Optimal dilutions for each application should be determined by the researcher.

Anti-Golgi phosphoprotein 3 GOLPH3 Antibody (A01333) Images



Western blot analysis of GOLPH3 in rat lung tissue lysate with GOLPH3 antibody at (A) 0.5 and (B) 1 ug/mL.



Immunofluorescence of GOLPH3 in Rat Lung cells with GOLPH3 antibody at 20 ug/mL.

Submit a product review to [Biocompare.com](https://www.biocompare.com)

Submit a review of this product to [Biocompare.com](https://www.biocompare.com) to receive a \$20 Amazon.com giftcard! Your reviews help your fellow scientists make the right decisions. Thank you for your contribution.



Anti-Golgi phosphoprotein 3 GOLPH3 Antibody

For Research Use Only. Not for use in diagnostic procedures.