

Anti-NM23-H1 (Y52) NME1 Antibody

Catalog Number: A01334Y52

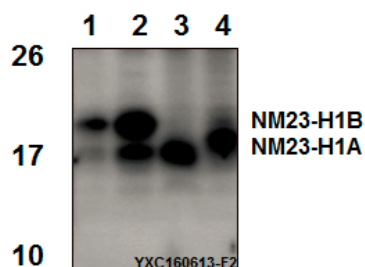
Overview

Product Name	Anti-NM23-H1 (Y52) NME1 Antibody
Reactive Species	Human, Mouse, Rat
Description	Boster Bio Anti-NM23-H1 (Y52) NME1 Antibody catalog # A01334Y52. Tested in WB,IHC applications. This antibody reacts with Human,Mouse,Rat.
Application	IHC, WB
Clonality	Polyclonal
Formulation	Rabbit IgG, 1mg/ml in PBS with 0.02% sodium azide, 50% glycerol, pH7.2
Storage Instructions	Store at -20°C for one year. For short term storage and frequent use, store at 4°C for up to one month. Avoid repeated freeze-thaw cycles.
Host	Rabbit
Uniprot ID	P15531

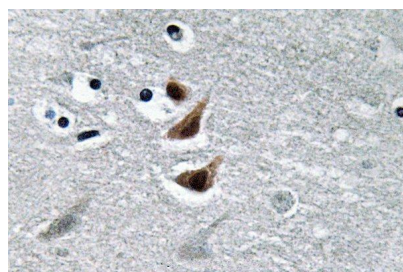
Technical Details

Immunogen	Synthetic peptide, corresponding to amino acids 20-70 of Human NM23-H1.
Cross Reactivity	No cross reactivity with other proteins.
Isotype	IgG
Form	Liquid
Concentration	1 mg/ml
Purification	The antibody was affinity-purified from rabbit antiserum by affinity-chromatography using epitope-specific immunogen and the purity is > 95% (by SDS-PAGE).
Suggested Dilutions	WB: 1:500-1:1000 IHC: 1:50-1:200

Anti-NM23-H1 (Y52) NME1 Antibody (A01334Y52) Images



Western blot (WB) analysis of NM23-H1 (Y52) polyclonal antibody at 1:500 dilution. Lane 1: U-87MG whole cell lysate (40ug) Lane 2: HepG2 whole cell lysate (40ug) Lane 3: BV2 whole cell lysate (40ug) Lane 4: C6 whole cell lysate (40ug)



Immunohistochemistry (IHC) analysis of NM23-H1 (Y52) pAb in paraffin-embedded human brain tissue.

Submit a product review to Biocompare.com

Submit a review of this product to Biocompare.com to receive a \$20 Amazon.com giftcard! Your reviews help your fellow scientists make the right decisions. Thank you for your contribution.



Anti-NM23-H1 (Y52) NME1 Antibody

For Research Use Only. Not for use in diagnostic procedures.