

## Anti-c-Kit (phospho-Y936) Antibody

Catalog Number: A01335Y936

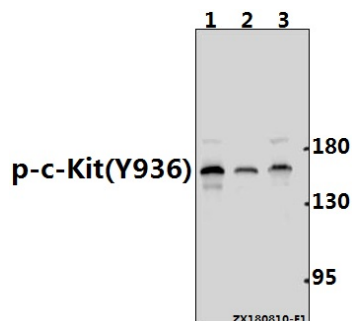
### Overview

Product Name	Anti-c-Kit (phospho-Y936) Antibody
Reactive Species	Human
Description	Boster Bio Anti-c-Kit (phospho-Y936) Antibody catalog # A01335Y936. Tested in WB applications. This antibody reacts with Human.
Application	WB
Clonality	Polyclonal
Formulation	Rabbit IgG, 1mg/ml in PBS with 0.02% sodium azide, 50% glycerol, pH7.2
Storage Instructions	Store at -20°C for one year. For short term storage and frequent use, store at 4°C for up to one month. Avoid repeated freeze-thaw cycles.
Host	Rabbit
Uniprot ID	P10721

### Technical Details

Immunogen	Synthetic phosphopeptide derived from human c-Kit around the phosphorylation site of Tyr936.
Cross Reactivity	No cross reactivity with other proteins.
Isotype	IgG
Form	Liquid
Concentration	1 mg/ml
Purification	The antibody was affinity-purified from rabbit antiserum by affinity-chromatography using epitope-specific immunogen and the purity is > 95% (by SDS-PAGE).
Suggested Dilutions	WB: 1:500-1:1000

## Anti-c-Kit (phospho-Y936) Antibody (A01335Y936) Images



Western blot (WB) analysis of p-c-Kit (Y936) pAb at 1:1000 dilution Lane1:A549 whole cell lysate(40ug) Lane2:HCT116 whole cell lysate(30ug) Lane3:SGC7901 whole cell lysate(40ug)

### Submit a product review to Biocompare.com

Submit a review of this product to Biocompare.com to receive a \$20 Amazon.com giftcard! Your reviews help your fellow scientists make the right decisions. Thank you for your contribution.



Anti-c-Kit (phospho-Y936) Antibody

For Research Use Only. Not for use in diagnostic procedures.