

## Anti-Phospho-c-Kit (Y936) Antibody

Catalog Number: A01335Y936-1

### About KIT

Plays a role in cytokinesis. Required for KIF14 localization to the central spindle and midbody. Putative RHO/RAC effector that binds to the GTP-bound forms of RHO and RAC1. It probably binds p21 with a tighter specificity in vivo. Dual specificity protein kinase activity catalyzing autophosphorylation and phosphorylation of exogenous substrates on both serine/threonine and tyrosine residues. Plays an important role in the regulation of cytokinesis and the development of the central nervous system. Phosphorylates MYL9/MLC2.

Nagase T., DNA Res. 6:63-70(1999).

Scherer S.E., Nature 440:346-351(2006).

Gruneberg U., J. Cell Biol. 172:363-372(2006).

### Overview

Product Name	Anti-Phospho-c-Kit (Y936) Antibody
Reactive Species	Human, Mouse
Description	Boster Bio Anti-Phospho-c-Kit (Y936) Antibody catalog # A01335Y936-1. Tested in ELISA, IHC, WB applications. This antibody reacts with Human, Mouse.
Application	ELISA, IHC, WB
Clonality	Polyclonal
Formulation	Liquid in PBS containing 50% glycerol, 0.5% BSA and 0.02% sodium azide.
Storage Instructions	Store at -20°C for one year. For short term storage and frequent use, store at 4°C for up to one month. Avoid repeated freeze-thaw cycles.
Host	Rabbit
Uniprot ID	P10721

### Technical Details

Immunogen	Synthesized peptide derived from human c-Kit around the phosphorylation site of Y936.
Predicted Reactive Species	Boar, Bovine, Canine, Golden Hamster
Cross Reactivity	No cross reactivity with other proteins.
Isotype	IgG
Form	Liquid
Concentration	1 mg/ml

Purification	The antibody was affinity-purified from rabbit antiserum by affinity-chromatography using epitope-specific immunogen.
Suggested Dilutions	<p>Dilute the sample so that the expected range of concentrations fall within the detection range of this kit.</p> <p>If the expected range of concentration is unknown, a pilot test should be conducted to decide the optimal dilution ratio for your samples.</p> <p>Some PubMed article(s) citing the expression level of this target are as follows:</p> <p>Boster Bio's internal QC testing used:</p> <p>WB 1:500-1:2000</p> <p>IHC 1:100-1:300</p> <p>ELISA 1:5000</p>

## Anti-Phospho-c-Kit (Y936) Antibody (A01335Y936-1) Images

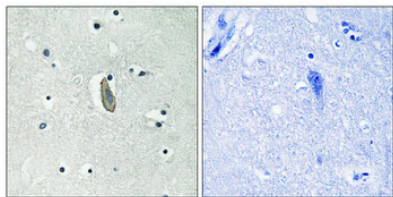


Figure 1. Immunohistochemistry validation of KIT using Anti-Phospho-c-Kit (Y936) Antibody (A01335Y936-1).

Immunohistochemical analysis of paraffin-embedded Human brain. Antibody was diluted at 1:100 (4°C)

## Submit a product review to Biocompare.com

Submit a review of this product to Biocompare.com to receive a \$20 Amazon.com giftcard! Your reviews help your fellow scientists make the right decisions. Thank you for your contribution.



Anti-Phospho-c-Kit (Y936) Antibody