

Anti-Metabotropic Glutamate Receptor 5/GRM5 Antibody Picoband®

Catalog Number: A01338-1

About GRM5

Metabotropic glutamate receptor 5 is a G protein-coupled receptor that in humans is encoded by the GRM5 gene. It is mapped to 11q14.2-q14.3. This gene encodes a member of the G-protein coupled receptor 3 protein family. The encoded protein is a metabotropic glutamate receptor, whose signaling activates a phosphatidylinositol-calcium second messenger system. This protein may be involved in the regulation of neural network activity and synaptic plasticity. Glutamatergic neurotransmission is involved in most aspects of normal brain function and can be perturbed in many neuropathologic conditions. A pseudogene of this gene has been defined on chromosome 11. Alternative splicing results in multiple transcript variants.

Overview

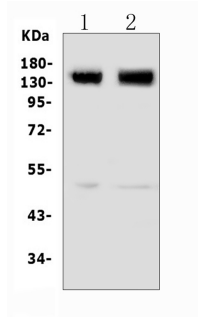
Product Name	Anti-Metabotropic Glutamate Receptor 5/GRM5 Antibody Picoband®
Reactive Species	Human, Mouse, Rat
Description	Boster Bio Anti-Metabotropic Glutamate Receptor 5/GRM5 Antibody catalog # A01338-1. Tested in ELISA, WB applications. This antibody reacts with Human, Mouse, Rat. The brand Picoband indicates this is a premium antibody that guarantees superior quality, high affinity, and strong signals with minimal background in Western blot applications. Only our best-performing antibodies are designated as Picoband, ensuring unmatched performance.
Application	ELISA, WB
Clonality	Polyclonal
Formulation	Each vial contains 4mg Trehalose, 0.9mg NaCl, 0.2mg Na ₂ HPO ₄ , 0.05mg NaN ₃ .
Storage Instructions	Store at -20°C for one year from date of receipt. After reconstitution, at 4°C for one month. It can also be aliquotted and stored frozen at -20°C for six months. Avoid repeated freeze-thaw cycles.
Host	Rabbit
Uniprot ID	P41594

Technical Details

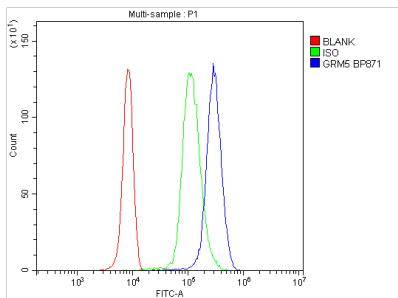
Immunogen	E.coli-derived human Metabotropic Glutamate Receptor 5/GRM5 recombinant protein (Position: E24-D560).
Recommended Detection Systems	Boster recommends Enhanced Chemiluminescent Kit with anti-Rabbit IgG (EK1002) for Western blot.
Cross Reactivity	No cross-reactivity with other proteins.
Isotype	Rabbit IgG

Form	Lyophilized
Concentration	Adding 0.2 ml of distilled water will yield a concentration of 500 ug/ml.
Purification	Immunogen affinity purified.
Suggested Dilutions	Western blot, 0.5-1ug/ml, Mouse, Rat ELISA, 0.1-0.5ug/ml, -

Anti-Metabotropic Glutamate Receptor 5/GRM5 Antibody Picoband® (A01338-1) Images



Western blot analysis of GRM5 using anti-GRM5 antibody (A01338-1). Electrophoresis was performed on a 5-20% SDS-PAGE gel at 70V (Stacking gel) / 90V (Resolving gel) for 2-3 hours. The sample well of each lane was loaded with 50ug of sample under reducing conditions. Lane 1: rat brain tissue lysates, Lane 2: mouse brain tissue lysates. After Electrophoresis, proteins were transferred to a Nitrocellulose membrane at 150mA for 50-90 minutes. Blocked the membrane with 5% Non-fat Milk/ TBS for 1.5 hour at RT. The membrane was incubated with rabbit anti-GRM5 antigen affinity purified polyclonal antibody (Catalog # A01338-1) at 0.5 ug/mL overnight at 4°C, then washed with TBS-0.1%Tween 3 times with 5 minutes each and probed with a goat anti-rabbit IgG-HRP secondary antibody at a dilution of 1:10000 for 1.5 hour at RT. The signal is developed using an Enhanced Chemiluminescent detection (ECL) kit (Catalog # EK1002) with Tanon 5200 system. A specific band was detected for GRM5 at approximately 150KD. The expected band size for GRM5 is at 132KD.



Flow Cytometry analysis of U937 cells using anti-GRM5 antibody (A01338-1). Overlay histogram showing U937 cells stained with A01338-1 (Blue line). The cells were blocked with 10% normal goat serum. And then incubated with rabbit anti-GRM5 Antibody (A01338-1, 1ug/1x10⁶ cells) for 30 min at 20°C. DyLight®488 conjugated goat anti-rabbit IgG (BA1127, 5-10ug/1x10⁶ cells) was used as secondary antibody for 30 minutes at 20°C. Isotype control antibody (Green line) was rabbit IgG (1ug/1x10⁶) used under the same conditions. Unlabelled sample (Red line) was also used as a control.

Submit a product review to [Biocompare.com](https://www.biocompare.com)

Submit a review of this product to [Biocompare.com](https://www.biocompare.com) to receive a \$20 Amazon.com giftcard! Your reviews help your fellow scientists make the right decisions. Thank you for your contribution.



Anti-Metabotropic Glutamate Receptor 5/GRM5 Antibody
For Research Use Only. Not for use in diagnostic procedures.