

Anti-Polycomb protein EED EED Antibody

Catalog Number: A01345

About EED

The EED protein (WAIT-1 or WD protein associated with integrin cytoplasmic tails-1), also called embryonic ectoderm development, is a member of the superfamily of WD-40 repeat proteins and widely conserved polycomb group (PcG) family of proteins. The polycomb group (PcG) is a large and evolutionarily conserved set of genes whose products act in multimeric complexes to modify histones, which are then thought to cause stable and heritable states of transcriptional repression. EED shuttles between the nucleus and the plasma membrane and can interact with the cytoplasmic tail of integrin beta7 subunit. EED exerted an antiviral activity at the late stage of HIV-1 replication.

Overview

Product Name	Anti-Polycomb protein EED EED Antibody
Reactive Species	Human, Mouse, Rat
Description	Boster Bio Anti-Polycomb protein EED EED Antibody (Catalog # A01345). Tested in ELISA, WB, IF applications. This antibody reacts with Human, Mouse, Rat.
Application	ELISA, IF, WB
Clonality	Polyclonal
Formulation	EED Antibody is supplied in PBS containing 0.02% sodium azide.
Storage Instructions	EED antibody can be stored at 4°C for three months and -20°C, stable for up to one year. Avoid repeated freeze-thaw cycles. Antibodies should not be exposed to prolonged high temperatures.
Host	Rabbit
Uniprot ID	O75530

Technical Details

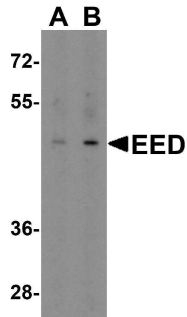
Immunogen	EED antibody was raised against an 18 amino acid synthetic peptide near the amino terminus of human EED. The immunogen is located within amino acids 30 - 80 of EED.
Predicted Reactive Species	Bovine, Chicken
Cross Reactivity	Four alternatively spliced transcript variants have been observed.
Isotype	IgG
Form	Liquid
Concentration	1 mg/mL
Purification	EED Antibody is affinity chromatography purified via peptide column.

Suggested Dilutions

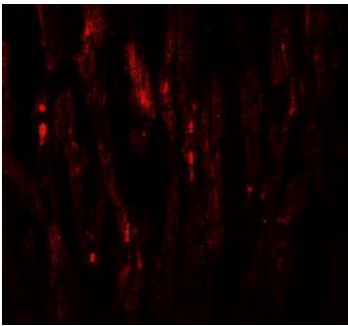
EED antibody can be used for detection of EED by Western blot at 2 ug/mL. For immunofluorescence start at 20 ug/mL.

Antibody validated: Western Blot in human samples and Immunofluorescence in human samples. All other applications and species not yet tested. Optimal dilutions for each application should be determined by the researcher.

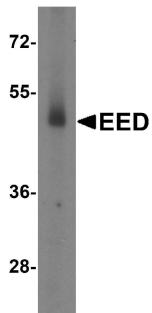
Anti-Polycomb protein EED EED Antibody (A01345) Images



Western blot analysis of EED in human heart tissue lysate with EED antibody at (A) 1 and (B) 2 ug/mL.



Immunofluorescence of EED in human heart tissue with EED antibody at 20 ug/mL.



Western blot analysis of EED expression in human testis tissue lysate with EED antibody at 2 ug/ml.

Submit a product review to [Biocompare.com](https://www.biocompare.com)

Submit a review of this product to [Biocompare.com](https://www.biocompare.com) to receive a \$20 Amazon.com giftcard! Your reviews help your fellow scientists make the right decisions. Thank you for your contribution.



Anti-Polycomb protein EED EED Antibody

For Research Use Only. Not for use in diagnostic procedures.