

Anti-EIF4G1 (phospho-S1148) Antibody

Catalog Number: A01351S1148-1

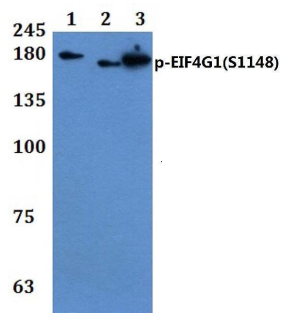
Overview

Product Name	Anti-EIF4G1 (phospho-S1148) Antibody
Reactive Species	Human, Mouse, Rat
Description	Boster Bio Anti-EIF4G1 (phospho-S1148) Antibody catalog # A01351S1148-1. Tested in WB applications. This antibody reacts with Human, Mouse, Rat.
Application	WB
Clonality	Polyclonal
Formulation	Rabbit IgG, 1mg/ml in PBS with 0.02% sodium azide, 50% glycerol, pH7.2
Storage Instructions	Store at -20°C for one year. For short term storage and frequent use, store at 4°C for up to one month. Avoid repeated freeze-thaw cycles.
Host	Rabbit
Uniprot ID	Q04637

Technical Details

Immunogen	A synthetic peptide corresponding to residues in Human EIF4G1 around the phosphorylation site of S1148.
Cross Reactivity	No cross reactivity with other proteins.
Isotype	IgG
Form	Liquid
Concentration	1 mg/ml
Purification	The antibody was affinity-purified from rabbit antiserum by affinity-chromatography using epitope-specific immunogen and the purity is > 95% (by SDS-PAGE).
Suggested Dilutions	WB: 1:500-1:1000

Anti-EIF4G1 (phospho-S1148) Antibody (A01351S1148-1) Images



Western blot (WB) analysis of p-EIF4G1(S1148) polyclonal antibody at 1:500 dilution Lane1:THP-1 treated with EGF(0.1ng/m) 30 min whole cell lysate Lane2:PC12 treated with EGF(0.1ng/m) 30 min whole cell lysate Lane3:Raw264.7 treated with EGF(0.1ng/m) 30 min whole cell lysate

Submit a product review to Biocompare.com

Submit a review of this product to Biocompare.com to receive a \$20 Amazon.com giftcard! Your reviews help your fellow scientists make the right decisions. Thank you for your contribution.



Anti-EIF4G1 (phospho-S1148) Antibody

For Research Use Only. Not for use in diagnostic procedures.