

Anti-Cytokeratin 18 (phospho-S33) KRT18 Antibody

Catalog Number: A01357S33

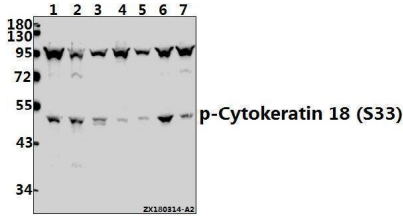
Overview

Product Name	Anti-Cytokeratin 18 (phospho-S33) KRT18 Antibody
Reactive Species	Human, Mouse, Rat
Description	Boster Bio Anti-Cytokeratin 18 (phospho-S33) KRT18 Antibody catalog # A01357S33. Tested in WB,IHC applications. This antibody reacts with Human,Mouse,Rat.
Application	IHC, WB
Clonality	Polyclonal
Formulation	Rabbit IgG, 1mg/ml in PBS with 0.02% sodium azide, 50% glycerol, pH7.2
Storage Instructions	Store at -20°C for one year. For short term storage and frequent use, store at 4°C for up to one month. Avoid repeated freeze-thaw cycles.
Host	Rabbit
Uniprot ID	P05783

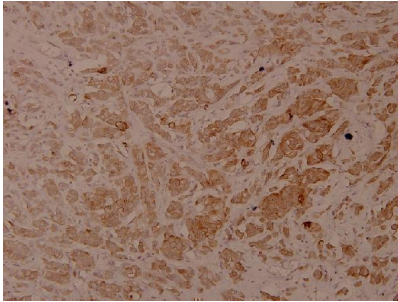
Technical Details

Immunogen	Synthetic phosphopeptide derived from human Cytokeratin 18 around the phosphorylation site of Serine 33.
Cross Reactivity	No cross reactivity with other proteins.
Isotype	IgG
Form	Liquid
Concentration	1 mg/ml
Purification	The antibody was affinity-purified from rabbit antiserum by affinity-chromatography using epitope-specific immunogen and the purity is > 95% (by SDS-PAGE).
Suggested Dilutions	WB: 1:500-1:1000 IHC: 1:50-1:200

Anti-Cytokeratin 18 (phospho-S33) KRT18 Antibody (A01357S33) Images



Western blot (WB) analysis of p-Cytokeratin 18 (S33) pAb at 1:500 dilution Lane1:HCT116 whole cell lysate(40ug) Lane2:L02 whole cell lysate(40ug) Lane3:MCF-7 whole cell lysate(40ug) Lane4:CT26 whole cell lysate(40ug) Lane5:PMVEC whole cell lysate(40ug) Lane6:A549 whole cell lysate(40ug) Lane7:SGC7901 whole cell lysate(40ug)



Immunohistochemistry (IHC) analyzes of p-Cytokeratin 18 (S33) pAb in paraffin-embedded human breast carcinoma tissue at 1:100.

Submit a product review to Biocompare.com

Submit a review of this product to Biocompare.com to receive a \$20 Amazon.com giftcard! Your reviews help your fellow scientists make the right decisions. Thank you for your contribution.



Anti-Cytokeratin 18 (phospho-S33) KRT18 Antibody

For Research Use Only. Not for use in diagnostic procedures.