

## Anti-KiSS1 receptor/KISS1R Antibody Picoband®

Catalog Number: A01364-1

### About KISS1R

The KiSS1-derived peptide receptor (also known as GPR54 or the Kisspeptin receptor) is a G protein-coupled receptor which binds the peptide hormone kisspeptin (metastin). Kisspeptin is involved in the regulation of endocrine function and the onset of puberty, with activation of the kisspeptin receptor triggering release of gonadotropin-releasing hormone (GnRH), and release of kisspeptin itself being inhibited by oestradiol but enhanced by GnRH. Reductions in kisspeptin levels with age may conversely be one of the reasons behind age-related declines in levels of other endocrine hormones such as luteinizing hormone.

### Overview

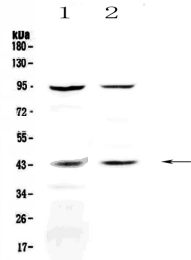
Product Name	Anti-KiSS1 receptor/KISS1R Antibody Picoband®
Reactive Species	Human, Mouse, Rat
Description	Boster Bio Anti-KiSS1 receptor/KISS1R Antibody Picoband® catalog # A01364-1. Tested in WB applications. This antibody reacts with Human, Mouse, Rat. The brand Picoband indicates this is a premium antibody that guarantees superior quality, high affinity, and strong signals with minimal background in Western blot applications. Only our best-performing antibodies are designated as Picoband, ensuring unmatched performance.
Application	WB
Clonality	Polyclonal
Formulation	Each vial contains 4mg Trehalose, 0.9mg NaCl, 0.2mg Na <sub>2</sub> HPO <sub>4</sub> , 0.05mg NaN <sub>3</sub> .
Storage Instructions	Store at -20°C for one year from date of receipt. After reconstitution, at 4°C for one month. It can also be aliquotted and stored frozen at -20°C for six months. Avoid repeated freeze-thaw cycles.
Host	Rabbit
Uniprot ID	Q969F8

### Technical Details

Immunogen	A synthetic peptide corresponding to a sequence in the middle region of human KiSS1 receptor, which shares 82.4% amino acid (aa) sequence identity with both mouse and rat KiSS1 receptor.
Recommended Detection Systems	Boster recommends Enhanced Chemiluminescent Kit with anti-Rabbit IgG (EK1002) for Western blot.
Cross Reactivity	No cross-reactivity with other proteins.
Isotype	Rabbit IgG
Form	Lyophilized

Concentration	Adding 0.2 ml of distilled water will yield a concentration of 500 ug/ml.
Suggested Dilutions	Western blot, 0.1-0.5ug/ml

## Anti-KiSS1 receptor/KISS1R Antibody Picoband® (A01364-1) Images



Western blot analysis of KiSS1 receptor using anti-KiSS1 receptor antibody (A01364-1). Electrophoresis was performed on a 5-20% SDS-PAGE gel at 70V (Stacking gel) / 90V (Resolving gel) for 2-3 hours. The sample well of each lane was loaded with 50ug of sample under reducing conditions. Lane 1: human WISH whole cell lysates, Lane 2: human HepG2 whole cell lysates. After Electrophoresis, proteins were transferred to a Nitrocellulose membrane at 150mA for 50-90 minutes. Blocked the membrane with 5% Non-fat Milk/ TBS for 1.5 hour at RT. The membrane was incubated with rabbit anti-KiSS1 receptor antigen affinity purified polyclonal antibody (Catalog # A01364-1) at 0.5 ug/mL overnight at 4°C, then washed with TBS-0.1%Tween 3 times with 5 minutes each and probed with a goat anti-rabbit IgG-HRP secondary antibody at a dilution of 1:10000 for 1.5 hour at RT. The signal is developed using an Enhanced Chemiluminescent detection (ECL) kit (Catalog # EK1002) with Tanon 5200 system. A specific band was detected for KiSS1 receptor at approximately 43KD. The expected band size for KiSS1 receptor is at 43KD.

### Submit a product review to Biocompare.com

Submit a review of this product to Biocompare.com to receive a \$20 Amazon.com giftcard! Your reviews help your fellow scientists make the right decisions. Thank you for your contribution.



Anti-KiSS1 receptor/KISS1R Antibody

For Research Use Only. Not for use in diagnostic procedures.