

Anti-TRAF1 Antibody Picoband®

Catalog Number: A01365

About TRAF1

TRAF1 (TNF Receptor-Associated Factor 1), also called EBI6, is a protein that in humans is encoded by the TRAF1 gene. The protein encoded by this gene is a member of the TNF receptor (TNFR) associated factor (TRAF) protein family. Siemienski et al. (1997) used fluorescence in situ hybridization to map the TRAF1 gene to 9q33-q34. Mosialos et al. (1995) found that LMP1, the EBV-transforming protein, specifically associates with LAP1 (TRAF3) or EBI6 in B lymphoblasts. LMP1 expression redirects LAP1 and EBI6 from scattered cytoplasmic structures to LMP1 plasma membrane patches. Both LAP1 and EBI6 associated with the cytoplasmic domain of p80/TNFR2 in vivo.

Overview

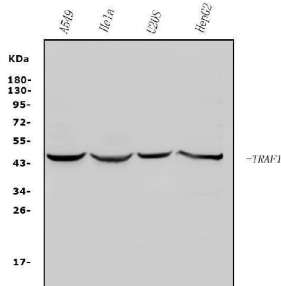
| | |
|----------------------|---|
| Product Name | Anti-TRAF1 Antibody Picoband® |
| Reactive Species | Human |
| Description | Boster Bio Anti-TRAF1 Antibody Picoband® catalog # A01365. Tested in ELISA, Flow Cytometry, WB applications. This antibody reacts with Human. The brand Picoband indicates this is a premium antibody that guarantees superior quality, high affinity, and strong signals with minimal background in Western blot applications. Only our best-performing antibodies are designated as Picoband, ensuring unmatched performance. |
| Application | ELISA, Flow Cytometry, WB |
| Clonality | Polyclonal |
| Formulation | Each vial contains 4mg Trehalose, 0.9mg NaCl, 0.2mg Na2HPO4, 0.01mg NaN3. |
| Storage Instructions | Store at -20°C for one year from date of receipt. After reconstitution, at 4°C for one month. It can also be aliquotted and stored frozen at -20°C for six months. Avoid repeated freeze-thaw cycles. |
| Host | Rabbit |
| Uniprot ID | Q13077 |

Technical Details

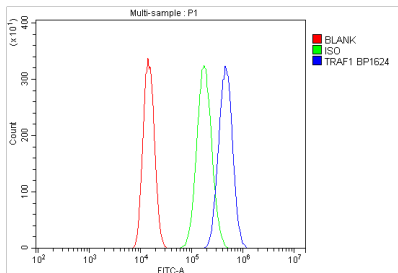
| | |
|-------------------------------|---|
| Immunogen | E.coli-derived human TRAF1 recombinant protein (Position: D14-D404). |
| Recommended Detection Systems | Boster recommends Enhanced Chemiluminescent Kit with anti-Rabbit IgG (EK1002) for Western blot. |
| Cross Reactivity | No cross-reactivity with other proteins. |
| Isotype | Rabbit IgG |
| Form | Lyophilized |
| Concentration | Adding 0.2 ml of distilled water will yield a concentration of 500 ug/ml. |

| | |
|---------------------|--|
| Purification | Immunogen affinity purified. |
| Suggested Dilutions | Western blot, 0.25-0.5ug/ml, Human Flow Cytometry (Fixed), 1-3ug/1x10 ⁶ cells, Human ELISA, 0.1-0.5ug/ml, - |

Anti-TRAF1 Antibody Picoband® (A01365) Images



Western blot analysis of TRAF1 using anti-TRAF1 antibody (A01365). Electrophoresis was performed on a 5-20% SDS-PAGE gel at 70V (Stacking gel) / 90V (Resolving gel) for 2-3 hours. The sample well of each lane was loaded with 50ug of sample under reducing conditions. Lane 1: human A549 whole cell lysates, Lane 2: human HELA whole cell lysates, Lane 3: human U20S whole cell lysates, Lane 4: human HEPG2 whole cell lysates. After Electrophoresis, proteins were transferred to a Nitrocellulose membrane at 150mA for 50-90 minutes. Blocked the membrane with 5% Non-fat Milk/TBS for 1.5 hour at RT. The membrane was incubated with rabbit anti-TRAF1 antigen affinity purified polyclonal antibody (Catalog # A01365) at 0.5 ug/mL overnight at 4°C, then washed with TBS-0.1%Tween 3 times with 5 minutes each and probed with a goat anti-rabbit IgG-HRP secondary antibody at a dilution of 1:5000 for 1.5 hour at RT. The signal is developed using an Enhanced Chemiluminescent detection (ECL) kit (Catalog # EK1002) with Tanon 5200 system. A specific band was detected for TRAF1 at approximately 46KD. The expected band size for TRAF1 is at 46KD.



Flow Cytometry analysis of A549 cells using anti-TRAF1 antibody (A01365). Overlay histogram showing A549 cells stained with A01365 (Blue line). To facilitate intracellular staining, cells were fixed with 4% paraformaldehyde and permeabilized with permeabilization buffer. The cells were blocked with 10% normal goat serum. And then incubated with rabbit anti-TRAF1 Antibody (A01365, 1ug/1x10⁶ cells) for 30 min at 20°C. DyLight®488 conjugated goat anti-rabbit IgG (BA1127, 5-10ug/1x10⁶ cells) was used as secondary antibody for 30 minutes at 20°C. Isotype control antibody (Green line) was rabbit IgG (1ug/1x10⁶) used under the same conditions. Unlabelled sample without incubation with primary antibody and secondary antibody (Red line) was used as a blank control.

Submit a product review to Biocompare.com

Submit a review of this product to Biocompare.com to receive a \$20 Amazon.com giftcard! Your reviews help your fellow scientists make the right decisions. Thank you for your contribution.



Anti-TRAF1 Antibody

For Research Use Only. Not for use in diagnostic procedures.