

Anti-DDC Antibody

Catalog Number: A01374

About DDC

DOPA decarboxylase (DDC) belongs to the group II decarboxylase family of proteins (1). It is an important protein in the catecholamine biosynthesis pathway. DDC catalyzes the second reaction in the biosynthesis of catecholamines, trace amines and serotonin (1,2). It can form a homodimer and is expressed in the central nervous system (2). DDC can be used as markers for dopaminergic, noradrenergic and serotonergic neurons in a variety of applications including depression, schizophrenia, Parkinson's disease, neuroendocrine tumors and drug abuse (3,4). Defects in DDC gene may cause the autosomal recessive disorder AADC deficiency (4).

Overview

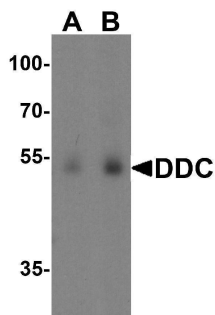
Product Name	Anti-DDC Antibody
Reactive Species	Human, Mouse, Rat
Description	Boster Bio Anti-DDC Antibody (Catalog # A01374). Tested in ELISA, WB, IHC-P, IF applications. This antibody reacts with Human, Mouse, Rat.
Application	ELISA, IF, IHC-P, WB
Clonality	Polyclonal
Formulation	DDC Antibody is supplied in PBS containing 0.02% sodium azide.
Storage Instructions	DDC antibody can be stored at 4°C for three months and -20°C, stable for up to one year.
Host	Rabbit
Uniprot ID	P20711

Technical Details

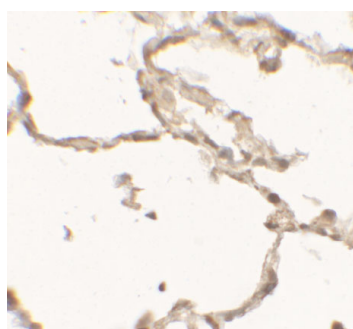
Immunogen	DDC antibody was raised against a 14 amino acid peptide near the carboxy terminus of human DDC. The immunogen is located within amino acids 390 - 440 of DDC .
Predicted Reactive Species	Bovine, Guinea Pig, Pig
Cross Reactivity	DDC antibody is human, mouse and rat reactive.
Isotype	IgG
Form	Liquid
Concentration	1 mg/mL
Purification	DDC Antibody is affinity chromatography purified via peptide column.
Suggested Dilutions	DDC antibody can be used for detection of DDC by Western blot at 1 - 2 ug/ml.

Antibody validated: Western Blot in human samples; Immunohistochemistry in human samples and Immunofluorescence in human samples. All other applications and species not yet tested. Optimal dilutions for each application should be determined by the researcher.

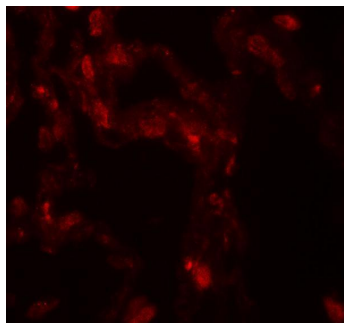
Anti-DDC Antibody (A01374) Images



Western blot analysis of DDC in human lung tissue lysate with DDC antibody at (A) 0.5 and (B) 1 ug/ml.



Immunohistochemistry of DDC in human lung tissue with DDC antibody at 2.5 ug/mL.



Immunofluorescence of DDC in human lung tissue with DDC antibody at 20 ug/mL.

Submit a product review to [Biocompare.com](https://www.biocompare.com)

Submit a review of this product to [Biocompare.com](https://www.biocompare.com) to receive a \$20 Amazon.com giftcard! Your reviews help your fellow scientists make the right decisions. Thank you for your contribution.



Anti-DDC Antibody

For Research Use Only. Not for use in diagnostic procedures.