

Anti-Tff1 Antibody

Catalog Number: A01391-1

About Tff1

TFF1 (Trefoil factor 1), also known as pS2, is a protein that in humans is encoded by the TFF1 gene. Members of the trefoil family are characterized by having at least one copy of the trefoil motif, a 40-amino acid domain that contains three conserved disulfides. They are stable secretory proteins expressed in gastrointestinal mucosa. Their functions are not defined, but they may protect the mucosa from insults, stabilize the mucus layer, and affect healing of the epithelium. It is found that TFF1 in normal human urine inhibited the growth of calcium oxalate crystals. Urinary TFF1 showed an inhibitory potency similar to that of nephrocalcin, and inhibition was dose dependent and inhibited by TFF1 antisera, particularly by antisera directed to the TFF1 C terminus. Concentrations and relative amounts of TFF1 in the urine of patients with idiopathic calcium oxalate kidney stones were significantly less than those found in controls. This gene, which is expressed in the gastric mucosa, has also been studied because of its expression in human tumors. This gene and two other related trefoil family member genes are found in a cluster on chromosome 21.

Overview

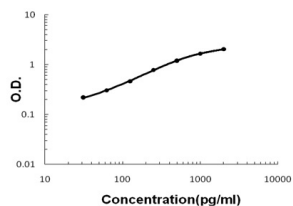
Product Name	Anti-Tff1 Antibody
Reactive Species	Mouse
Description	Boster Bio Anti-Tff1 Antibody catalog # A01391-1. Tested in ELISA applications. This antibody reacts with Mouse.
Application	ELISA (Cap)
Clonality	Polyclonal
Formulation	Each vial contains antibody formulated with stabilizing components, 0.9 mg NaCl, 0.2 mg Na ₂ HPO ₄ , and 0.05 mg Na ₃ N. *This antibody is supplied in a stabilized formulation. Compatibility with conjugation reactions depends on the chemistry of the conjugation method used. For conjugation methods that are not compatible with the stabilizing components present in this formulation, a carrier-free antibody format is required.
Storage Instructions	Store at -20°C for one year from date of receipt. After reconstitution, at 4°C for one month. It can also be aliquotted and stored frozen at -20°C for six months. Avoid repeated freeze-thaw cycles.
Host	Rabbit
Uniprot ID	Q08423

Technical Details

Immunogen	E. coli-derived mouse Tff1 recombinant protein (Position: Q22-F87). Mouse Tff1 shares 67.2% and 83.6% amino acid (aa) sequence identity with human and rat Tff1, respectively.
Recommended Detection Systems	Boster recommends Enhanced Chemiluminescent Kit with anti-Rabbit IgG (EK1002) for Western blot, and HRP Conjugated anti-Rabbit IgG Super Vision Assay Kit (SV0002-1) for IHC(P).

Cross Reactivity	No cross-reactivity with other proteins.
Isotype	Rabbit IgG
Form	Lyophilized
Concentration	Adding 0.2 ml of distilled water will yield a concentration of 500 ug/ml.
Purification	Immunogen affinity purified.
Suggested Dilutions	ELISA Capture (Matched Antibody Pair), 2-8ug/ml

Anti-Tff1 Antibody (A01391-1) Images



Sandwich ELISA - Recombinant mouse Tff1 protein standard curve. Use in combination with reagents from Mouse Tff1 ELISA Kit EZ-Set (DIY Antibody Pairs) (EZ1620).

Submit a product review to Biocompare.com

Submit a review of this product to Biocompare.com to receive a \$20 Amazon.com giftcard! Your reviews help your fellow scientists make the right decisions. Thank you for your contribution.



Anti-Tff1 Antibody

For Research Use Only. Not for use in diagnostic procedures.