

Anti-PLB-T17 Antibody

Catalog Number: A01395

About PLN

PLB is a 52 amino acid phosphoprotein which regulates the calcium pump of cardiac sarcoplasmic reticulum (SR). PLB is an oligomer of five identical subunits each having a cytoplasmic and transmembrane domain. The cytoplasmic domain (residues 1 to 25) contains the phosphorylation sites and is highly basic and readily cleaved by proteases; whereas the transmembrane domain (residues 25 to 52) is mostly hydrophobic, protease resistant and stabilizes the pentamer.

Overview

Product Name	Anti-PLB-T17 Antibody
Reactive Species	Human, Mouse, Rat
Description	Boster Bio Anti-PLB-T17 Antibody (Catalog # A01395). Tested in Flow Cytometry, IHC-P, WB application(s). This antibody reacts with Human, Mouse, Rat.
Application	Flow Cytometry, IHC-P, WB
Clonality	Polyclonal
Formulation	Purified polyclonal antibody supplied in PBS with 0.09% (W/V) sodium azide.
Storage Instructions	Maintain refrigerated at 2-8°C for up to 2 weeks. For long-term storage, store at -20°C in small aliquots to prevent freeze-thaw cycles.
Host	Rabbit
Uniprot ID	P26678

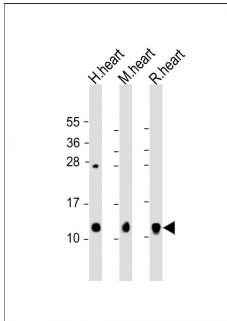
Technical Details

Immunogen	This PLB antibody is generated from rabbits immunized with a KLH conjugated synthetic peptide between 1-30 amino acids of human PLB.
Predicted Reactive Species	Bovine, Pig
Recommended Detection Systems	Boster recommends Enhanced Chemiluminescent Kit with anti-Rabbit IgG (EK1002) for Western blot, and HRP Conjugated anti-Rabbit IgG Super Vision Assay Kit (SV0002-1) for IHC(P).
Cross Reactivity	No cross reactivity with other proteins.
Isotype	Rabbit IgG
Form	Liquid
Purification	This antibody is purified through a protein A column, followed by peptide affinity purification.

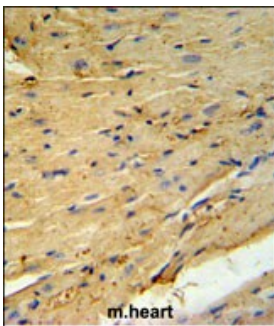
Suggested Dilutions

WB: 1:2000
IHC-P: 1:50-1:100
FC: 1:10-1:50

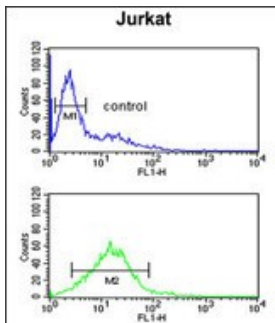
Anti-PLB-T17 Antibody (A01395) Images



All lanes : Anti-PLB Antibody at 1:2000 dilution
Lane 1: human heart lysate
Lane 2: mouse heart lysate
Lane 3: rat heart lysate
Lysates/proteins at 20 µg per lane.
Secondary Goat Anti-Rabbit IgG, (H+L), Peroxidase conjugated at 1/10000 dilution. Predicted band size : 6 kDa
Blocking/Dilution buffer: 5% NFDN/TBST.



PLB-T17 Antibody IHC analysis in formalin fixed and paraffin embedded mouse heart tissue followed by peroxidase conjugation of the secondary antibody and DAB staining. This data demonstrates the use of the PLB-T17 Antibody for immunohistochemistry. Clinical relevance has not been evaluated.



PLB-T17 Antibody flow cytometric analysis of Jurkat cells (bottom histogram) compared to a negative control cell (top histogram). FITC-conjugated goat-anti-rabbit secondary antibodies were used for the analysis.

Submit a product review to [Biocompare.com](https://www.biocompare.com)

Submit a review of this product to [Biocompare.com](https://www.biocompare.com) to receive a \$20 Amazon.com giftcard! Your reviews help your fellow scientists make the right decisions. Thank you for your contribution.



Anti-PLB-T17 Antibody

For Research Use Only. Not for use in diagnostic procedures.