

## Anti-MEF-2 (phospho-T312) MEF2A Antibody

Catalog Number: A01398T312

### Overview

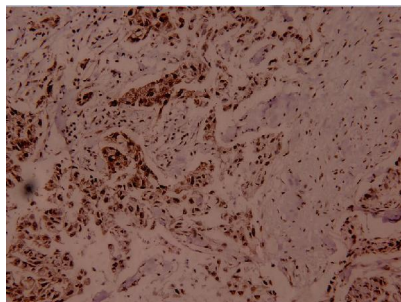
Product Name	Anti-MEF-2 (phospho-T312) MEF2A Antibody
Reactive Species	Human, Mouse, Rat
Description	Boster Bio Anti-MEF-2 (phospho-T312) MEF2A Antibody catalog # A01398T312. Tested in IHC,IP applications. This antibody reacts with Human,Mouse,Rat.
Application	IP, IHC
Clonality	Polyclonal
Formulation	Rabbit IgG, 1mg/ml in PBS with 0.02% sodium azide, 50% glycerol, pH7.2
Storage Instructions	Store at -20°C for one year. For short term storage and frequent use, store at 4°C for up to one month. Avoid repeated freeze-thaw cycles.
Host	Rabbit
Uniprot ID	Q02078

### Technical Details

Immunogen	Synthetic phosphopeptide derived from human MEF-2 around the phosphorylation site of Threonine 312.
Cross Reactivity	No cross reactivity with other proteins.
Isotype	IgG
Form	Liquid
Concentration	1 mg/ml
Purification	The antibody was affinity-purified from rabbit antiserum by affinity-chromatography using epitope-specific immunogen and the purity is > 95% (by SDS-PAGE).
Suggested Dilutions	IHC: 1:50-1:200 IP: 1:10-1:100

## Anti-MEF-2 (phospho-T312) MEF2A Antibody (A01398T312) Images

---



Immunohistochemistry (IHC) analyzes of p-MEF-2 (T312) pAb in paraffin-embedded human breast carcinoma tissue at 1:100.

---

### Submit a product review to Biocompare.com

Submit a review of this product to Biocompare.com to receive a \$20 Amazon.com giftcard! Your reviews help your fellow scientists make the right decisions. Thank you for your contribution.



Anti-MEF-2 (phospho-T312) MEF2A Antibody

For Research Use Only. Not for use in diagnostic procedures.