

## Anti-Phospho-PA gamma (S197) PAK2 Antibody

Catalog Number: A01419S197

### About PAK2

Following activation by double-stranded RNA in the presence of ATP, the kinase becomes autophosphorylated and can catalyze the phosphorylation of the translation initiation factor EIF2S1, which leads to an inhibition of the initiation of protein synthesis. Double-stranded RNA is generated during the course of a viral infection.

Abujiang Pataer, et.al. (2002) Cancer Res ; 62: 2239.

K. D. Ryman, et.al. (2005) J. Virol ; 79: 1487 - 1499.

Susana Guerra, et.al. (2006) J. Biol. Chem ; 281: 18734 - 18745.

### Overview

Product Name	Anti-Phospho-PA gamma (S197) PAK2 Antibody
Reactive Species	Human, Mouse, Rat
Description	Boster Bio Anti-Phospho-PA gamma (S197) PAK2 Antibody catalog # A01419S197. Tested in ELISA, IHC applications. This antibody reacts with Human, Mouse, Rat.
Application	ELISA, IHC
Clonality	Polyclonal
Formulation	Liquid in PBS containing 50% glycerol, 0.5% BSA and 0.02% sodium azide.
Storage Instructions	Store at -20°C for one year. For short term storage and frequent use, store at 4°C for up to one month. Avoid repeated freeze-thaw cycles.
Host	Rabbit
Uniprot ID	Q13177

### Technical Details

Immunogen	Synthesized peptide derived from human PAKgamma around the phosphorylation site of S197.
Predicted Reactive Species	Boar, Bovine, Canine, Golden Hamster
Cross Reactivity	No cross reactivity with other proteins.
Isotype	IgG
Form	Liquid
Concentration	1 mg/ml

Purification	The antibody was affinity-purified from rabbit antiserum by affinity-chromatography using epitope-specific immunogen.
Suggested Dilutions	<p>Dilute the sample so that the expected range of concentrations fall within the detection range of this kit.</p> <p>If the expected range of concentration is unknown, a pilot test should be conducted to decide the optimal dilution ratio for your samples.</p> <p>Some PubMed article(s) citing the expression level of this target are as follows:</p> <p>Boster Bio's internal QC testing used:</p> <p>IHC 1:100-1:300</p> <p>ELISA 1:5000</p>

## Anti-Phospho-PA gamma (S197) PAK2 Antibody (A01419S197) Images

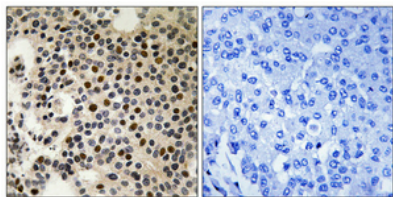


Figure 1. Immunohistochemistry validation of PAK2 using Anti-Phospho-PA gamma (S197) PAK2 Antibody (A01419S197).

Immunohistochemical analysis of paraffin-embedded Human breast cancer. Antibody was diluted at 1:100 (4°C

## Submit a product review to Biocompare.com

Submit a review of this product to Biocompare.com to receive a \$20 Amazon.com giftcard! Your reviews help your fellow scientists make the right decisions. Thank you for your contribution.



Anti-Phospho-PA gamma (S197) PAK2 Antibody