

Anti-Cytokeratin 8 (phospho-S432) KRT8 Antibody

Catalog Number: A01421S432

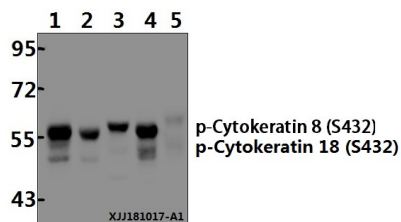
Overview

Product Name	Anti-Cytokeratin 8 (phospho-S432) KRT8 Antibody
Reactive Species	Human, Mouse
Description	Boster Bio Anti-Cytokeratin 8 (phospho-S432) KRT8 Antibody catalog # A01421S432. Tested in WB applications. This antibody reacts with Human, Mouse.
Application	WB
Clonality	Polyclonal
Formulation	Rabbit IgG, 1mg/ml in PBS with 0.02% sodium azide, 50% glycerol, pH7.2
Storage Instructions	Store at -20°C for one year. For short term storage and frequent use, store at 4°C for up to one month. Avoid repeated freeze-thaw cycles.
Host	Rabbit
Uniprot ID	P05787

Technical Details

Immunogen	Synthetic phosphopeptide derived from human Casein Kinase IIbeta around the phosphorylation site of Serine 209
Cross Reactivity	No cross reactivity with other proteins.
Isotype	IgG
Form	Liquid
Concentration	1 mg/ml
Purification	The antibody was affinity-purified from rabbit antiserum by affinity-chromatography using epitope-specific immunogen and the purity is > 95% (by SDS-PAGE).
Suggested Dilutions	WB: 1:500-1:1000

Anti-Cytokeratin 8 (phospho-S432) KRT8 Antibody (A01421S432) Images



Western blot (WB) analysis of Cytokeratin 8 (phospho-S432) polyclonal antibody at 1:500 dilution Lane1:PC3 whole cell lysate(20µg) Lane2:MCF-7 whole cell lysate(20µg) Lane3:HeLa whole cell lysate(20µg) Lane4:A549 whole cell lysate(20µg) Lane5:The Lung tissue lysate of Mouse(20µg)

Submit a product review to Biocompare.com

Submit a review of this product to Biocompare.com to receive a \$20 Amazon.com giftcard! Your reviews help your fellow scientists make the right decisions. Thank you for your contribution.



Anti-Cytokeratin 8 (phospho-S432) KRT8 Antibody

For Research Use Only. Not for use in diagnostic procedures.