

Anti-Elk1(Ab-389) Antibody

Catalog Number: A01426

About ELK1

Elk-1 is a member of the Ets family of transcription factors and of the ternary complex factor (TCF) subfamily. Proteins of the TCF subfamily form a ternary complex by binding to the the serum response factor and the serum reponse element in the promoter of the c-fos proto-oncogene. The protein encoded by this gene is a nuclear target for the ras-raf-MAPK signaling cascade. Alternatively spliced transcript variants encoding the same protein have been found for this gene

Janknecht R, et al. (1993) EMBO J. 12(13): 5097-5104.

Marais R, et al. (1993) Cell 73:381-393.

Kortenjann M, et al. (1994) Mol Cell Biol. 14:4815-4824.

Hill C S, et al. (1995) Cell. 80:199-211.

Cavigelli M, et al. (1995) EMBO J. 14:5957-5964.

Overview

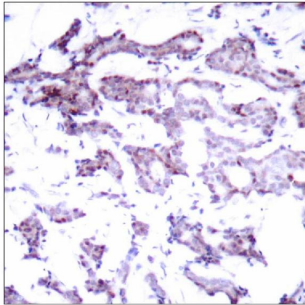
Product Name	Anti-Elk1(Ab-389) Antibody
Reactive Species	Human, Mouse, Rat
Description	Boster Bio Anti-Elk1(Ab-389) Antibody (Catalog # A01426). Tested in WB, IHC, IF applications. This antibody reacts with Human, Mouse, Rat.
Application	IF, IHC, WB
Clonality	Polyclonal
Formulation	Supplied at 1.0mg/mL in phosphate buffered saline (without Mg ²⁺ and Ca ²⁺), pH 7.4, 150mM NaCl, 0.02% sodium azide and 50% glycerol.
Storage Instructions	Store at -20°C for one year. For short term storage and frequent use, store at 4°C for up to one month. Avoid repeated freeze-thaw cycles.
Host	Rabbit
Uniprot ID	P19419

Technical Details

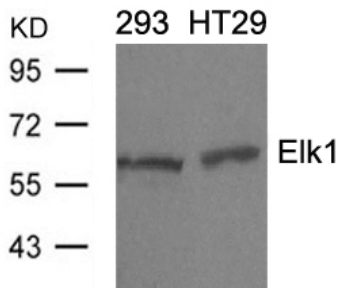
Immunogen	Peptide sequence around aa.387~391 (P-R-S-P-A) derived from Human Elk1.
Predicted Reactive Species	Boar, Bovine, Canine, Golden Hamster
Cross Reactivity	No cross reactivity with other proteins.
Isotype	IgG

Form	Liquid
Concentration	1 mg/ml
Purification	Antibodies were produced by immunizing rabbits with synthetic peptide and KLH conjugates. Antibodies were purified by affinity-chromatography using epitope-specific peptide.
Suggested Dilutions	<p>Dilute the sample so that the expected range of concentrations fall within the detection range of this kit.</p> <p>If the expected range of concentration is unknown, a pilot test should be conducted to decide the optimal dilution ratio for your samples.</p> <p>Some PubMed article(s) citing the expression level of this target are as follows:</p> <p>Boster Bio's internal QC testing used: Predicted MW: 62kd Western blotting: 1:500~1:1000 Immunohistochemistry: 1:50~1:100 Immunofluorescence: 1:100~1:200</p>

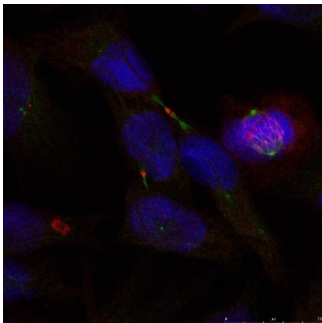
Anti-Elk1(Ab-389) Antibody (A01426) Images



Immunohistochemical analysis of paraffin-embedded human breast carcinoma tissue using Elk1(Ab-389) antibody A01426



Western blot analysis of extracts from 293 and HT29 cells using Elk1(Ab-389) antibody A01426.



Immunofluorescence staining of methanol-fixed HeLa cells using Elk1(Ab-389) antibody A01426.

Submit a product review to Biocompare.com

Submit a review of this product to Biocompare.com to receive a \$20 Amazon.com giftcard! Your reviews help your fellow scientists make the right decisions. Thank you for your contribution.



Anti-Elk1(Ab-389) Antibody