

Anti-Lanosterol synthase LSS Antibody

Catalog Number: A01431

About LSS

Elk-1 is a member of the Ets family of transcription factors and of the ternary complex factor (TCF) subfamily. Proteins of the TCF subfamily form a ternary complex by binding to the the serum response factor and the serum response element in the promoter of the c-fos proto-oncogene. The protein encoded by this gene is a nuclear target for the ras-raf-MAPK signaling cascade. Alternatively spliced transcript variants encoding the same protein have been found for this gene

Janknecht R, et al. (1993) EMBO J. 12(13): 5097-5104.

Marais R, et al. (1993) Cell 73:381-393.

Kortenjann M, et al. (1994) Mol Cell Biol. 14:4815-4824.

Hill C S, et al. (1995) Cell. 80:199-211.

Cavigelli M, et al. (1995) EMBO J. 14:5957-5964.

Overview

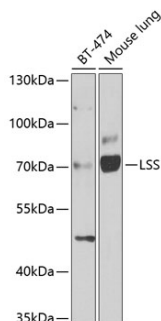
Product Name	Anti-Lanosterol synthase LSS Antibody
Reactive Species	Human, Mouse
Description	Boster Bio Anti-Lanosterol synthase LSS Antibody catalog # A01431. Tested in WB applications. This antibody reacts with Human,Mouse.
Application	WB
Clonality	Polyclonal
Formulation	Rabbit IgG, 1mg/ml in PBS with 0.02% sodium azide, 50% glycerol, pH7.2
Storage Instructions	Store at -20°C for one year. For short term storage and frequent use, store at 4°C for up to one month. Avoid repeated freeze-thaw cycles.
Host	Rabbit
Uniprot ID	P48449

Technical Details

Immunogen	Synthesized peptide derived from human Elk-1 around the phosphorylation site of S389.
Predicted Reactive Species	Boar, Bovine, Canine, Golden Hamster
Cross Reactivity	No cross reactivity with other proteins.
Isotype	IgG

Form	Liquid
Concentration	1 mg/ml
Purification	The antibody was affinity-purified from rabbit antiserum by affinity-chromatography using epitope-specific immunogen and the purity is > 95% (by SDS-PAGE).
Suggested Dilutions	<p>Dilute the sample so that the expected range of concentrations fall within the detection range of this kit.</p> <p>If the expected range of concentration is unknown, a pilot test should be conducted to decide the optimal dilution ratio for your samples.</p> <p>Some PubMed article(s) citing the expression level of this target are as follows:</p> <p>Boster Bio's internal QC testing used:</p> <p>WB: 1:500-1:2000</p>

Anti-Lanosterol synthase LSS Antibody (A01431) Images



Western blot analysis of extracts of HepG2 cells, using LSS antibody at 1:500 dilution. Secondary antibody: HRP Goat Anti-Rabbit IgG at 1:10000 dilution. Lysates/proteins: 25ug per lane.

Submit a product review to Biocompare.com

Submit a review of this product to Biocompare.com to receive a \$20 Amazon.com giftcard! Your reviews help your fellow scientists make the right decisions. Thank you for your contribution.



Anti-Lanosterol synthase LSS Antibody