

## Anti-Eotaxin CCL11 Antibody

Catalog Number: A01438-1

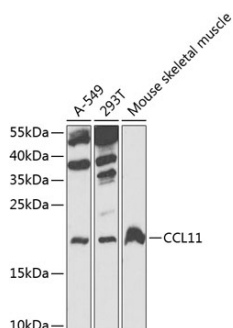
### Overview

Product Name	Anti-Eotaxin CCL11 Antibody
Reactive Species	Human, Mouse, Rat
Description	Boster Bio Anti-Eotaxin CCL11 Antibody catalog # A01438-1. Tested in WB,IHC,IF applications. This antibody reacts with Human,Mouse,Rat.
Application	IF, IHC, WB
Clonality	Polyclonal
Formulation	Rabbit IgG, 1mg/ml in PBS with 0.02% sodium azide, 50% glycerol, pH7.2
Storage Instructions	Store at -20°C for one year. For short term storage and frequent use, store at 4°C for up to one month. Avoid repeated freeze-thaw cycles.
Host	Rabbit
Uniprot ID	P51671

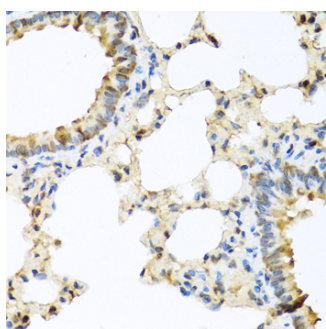
### Technical Details

Immunogen	Recombinant protein of human CCL11.
Cross Reactivity	No cross reactivity with other proteins.
Isotype	IgG
Form	Liquid
Concentration	1 mg/ml
Purification	The antibody was affinity-purified from rabbit antiserum by affinity-chromatography using epitope-specific immunogen and the purity is > 95% (by SDS-PAGE).
Suggested Dilutions	WB: 1:500-1:2000 IHC: 1:50-1:200 IF: 1:50-1:100

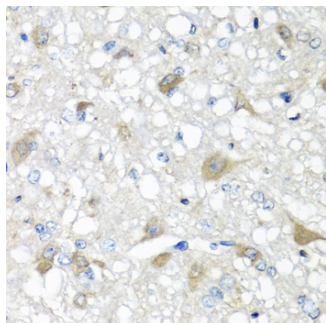
## Anti-Eotaxin CCL11 Antibody (A01438-1) Images



Western blot analysis of extracts of various cell lines, using CCL11 antibody.



Immunohistochemistry of paraffin-embedded rat brain using CCL11 antibody at dilution of 1:100 (40x lens).



Immunohistochemistry of paraffin-embedded human stomach using CCL11 antibody at dilution of 1:100 (40x lens).

### Submit a product review to [Biocompare.com](https://www.biocompare.com)

Submit a review of this product to [Biocompare.com](https://www.biocompare.com) to receive a \$20 Amazon.com giftcard! Your reviews help your fellow scientists make the right decisions. Thank you for your contribution.



Anti-Eotaxin CCL11 Antibody

For Research Use Only. Not for use in diagnostic procedures.