

## Anti-FES Antibody Picoband®

Catalog Number: A01453-2

### About FES

FES(feline sarcoma oncogene) is an enzyme that in humans is encoded by the FES gene. This gene encodes the human cellular counterpart of a feline sarcoma retrovirus protein with transforming capabilities. Non-onc intervening sequences were present in the human counterpart. The gene product has tyrosine-specific protein kinase activity and that activity is required for maintenance of cellular transformation. Its chromosomal location has linked it to a specific translocation event identified in patients with acute promyelocytic leukemia, but it is also involved in normal hematopoiesis. A truncated transcript has been identified that is generated utilizing a start site in one of the far downstream exons but a protein product associated with this transcript has not been identified.

### Overview

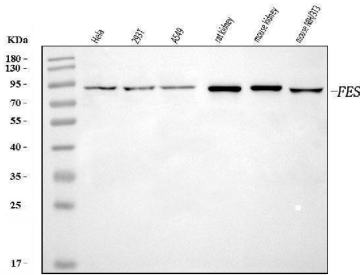
Product Name	Anti-FES Antibody Picoband®
Reactive Species	Human, Mouse, Rat
Description	Boster Bio Anti-FES Antibody Picoband® catalog # A01453-2. Tested in ELISA, WB applications. This antibody reacts with Human, Mouse, Rat. The brand Picoband indicates this is a premium antibody that guarantees superior quality, high affinity, and strong signals with minimal background in Western blot applications. Only our best-performing antibodies are designated as Picoband, ensuring unmatched performance.
Application	ELISA, WB
Clonality	Polyclonal
Formulation	Each vial contains 4 mg Trehalose, 0.9 mg NaCl, 0.2 mg Na <sub>2</sub> HPO <sub>4</sub> .
Storage Instructions	At -20°C for one year from date of receipt. After reconstitution, at 4°C for one month. It can also be aliquotted and stored frozen at -20°C for six months. Avoid repeated freezing and thawing.
Host	Rabbit
Uniprot ID	P07332

### Technical Details

Immunogen	E.coli-derived human FES recombinant protein (Position: H13-R822).
Recommended Detection Systems	Boster recommends Enhanced Chemiluminescent Kit with anti-Rabbit IgG (EK1002) for Western blot.
Cross Reactivity	No cross-reactivity with other proteins.
Isotype	Rabbit IgG
Form	Lyophilized

Concentration	Adding 0.2 ml of distilled water will yield a concentration of 500 ug/ml.
Purification	Immunogen affinity purified.
Suggested Dilutions	Western blot, 0.25-0.5 ug/ml, Human, Mouse, Rat ELISA, 0.1-0.5 ug/ml, -

## Anti-FES Antibody Picoband® (A01453-2) Images



Western blot analysis of FES using anti-FES antibody (A01453-2). Electrophoresis was performed on a 5-20% SDS-PAGE gel at 70V (Stacking gel) / 90V (Resolving gel) for 2-3 hours. The sample well of each lane was loaded with 30 ug of sample under reducing conditions. Lane 1: human HeLa whole cell lysates, Lane 2: human 293T whole cell lysates, Lane 3: human A549 whole cell lysates, Lane 4: rat kidney tissue lysates, Lane 5: mouse kidney tissue lysates, Lane 6: mouse NIH/3T3 whole cell lysates. After electrophoresis, proteins were transferred to a nitrocellulose membrane at 150 mA for 50-90 minutes. Blocked the membrane with 5% non-fat milk/TBS for 1.5 hour at RT. The membrane was incubated with rabbit anti-FES antigen affinity purified polyclonal antibody (Catalog # A01453-2) at 0.5 ug/mL overnight at 4°C, then washed with TBS-0.1%Tween 3 times with 5 minutes each and probed with a goat anti-rabbit IgG-HRP secondary antibody at a dilution of 1:5000 for 1.5 hour at RT. The signal is developed using an Enhanced Chemiluminescent detection (ECL) kit (Catalog # EK1002) with Tanon 5200 system. A specific band was detected for FES at approximately 93 kDa. The expected band size for FES is at 93 kDa.

### Submit a product review to [Biocompare.com](https://www.biocompare.com)

Submit a review of this product to [Biocompare.com](https://www.biocompare.com) to receive a \$20 Amazon.com giftcard! Your reviews help your fellow scientists make the right decisions. Thank you for your contribution.



### Anti-FES Antibody

For Research Use Only. Not for use in diagnostic procedures.