

Anti-PKD1 (phospho-S910) PRKD1 Antibody

Catalog Number: A01455S910

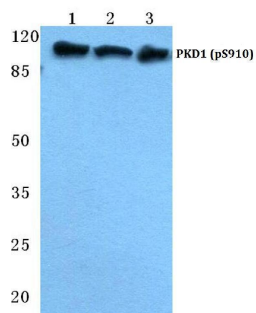
Overview

Product Name	Anti-PKD1 (phospho-S910) PRKD1 Antibody
Reactive Species	Human, Mouse, Rat
Description	Boster Bio Anti-PKD1 (phospho-S910) PRKD1 Antibody catalog # A01455S910. Tested in WB applications. This antibody reacts with Human, Mouse, Rat.
Application	WB
Clonality	Polyclonal
Formulation	Rabbit IgG, 1mg/ml in PBS with 0.02% sodium azide, 50% glycerol, pH7.2
Storage Instructions	Store at -20°C for one year. For short term storage and frequent use, store at 4°C for up to one month. Avoid repeated freeze-thaw cycles.
Host	Rabbit
Uniprot ID	Q15139

Technical Details

Immunogen	Synthetic phosphopeptide derived from human PKD1 around the phosphorylation site of Serine 910.
Cross Reactivity	No cross reactivity with other proteins.
Isotype	IgG
Form	Liquid
Concentration	1 mg/ml
Purification	The antibody was affinity-purified from rabbit antiserum by affinity-chromatography using epitope-specific immunogen and the purity is > 95% (by SDS-PAGE).
Suggested Dilutions	WB: 1:500-1:1000

Anti-PKD1 (phospho-S910) PRKD1 Antibody (A01455S910) Images



Western blot (WB) analysis of p-PKD1 (S910) polyclonal antibody at 1:500 dilution Lane1:HEK293T cell lysate treated with PMA(100nM,15mins) Lane2:NIH-3T3 cell lysate treated with PMA(100nM,15mins) Lane3:H9C2 cell lysate treated with PMA(100nM,15mins)

Submit a product review to Biocompare.com

Submit a review of this product to Biocompare.com to receive a \$20 Amazon.com giftcard! Your reviews help your fellow scientists make the right decisions. Thank you for your contribution.



Anti-PKD1 (phospho-S910) PRKD1 Antibody

For Research Use Only. Not for use in diagnostic procedures.