

Anti-Cathepsin B CTSB Antibody

Catalog Number: A01456-1

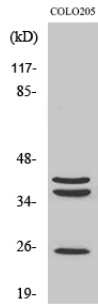
Overview

Product Name	Anti-Cathepsin B CTSB Antibody
Reactive Species	Human, Mouse, Rat
Description	Boster Bio Anti-Cathepsin B CTSB Antibody catalog # A01456-1. Tested in WB, IHC, IF, ELISA applications. This antibody reacts with Human, Mouse, Rat.
Application	ELISA, IF, IHC, WB
Clonality	Polyclonal
Formulation	Liquid in PBS containing 50% glycerol, 0.5% stabilizing protein and 0.02% sodium azide. *This antibody is supplied in a stabilized formulation. Compatibility with conjugation reactions depends on the chemistry of the conjugation method used. For conjugation methods that are not compatible with the stabilizing components present in this formulation, a carrier-free antibody format is required.
Storage Instructions	Store at -20°C for one year. For short term storage and frequent use, store at 4°C for up to one month. Avoid repeated freeze-thaw cycles.
Host	Rabbit
Uniprot ID	P07858

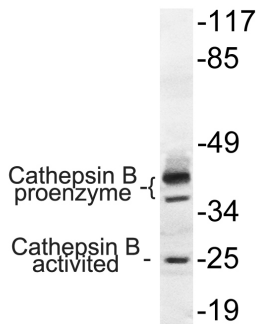
Technical Details

Immunogen	The antiserum was produced against synthesized peptide derived from human Cathepsin B. AA range:168-217
Isotype	IgG
Form	Liquid
Concentration	1 mg/ml
Purification	Immunogen affinity purified
Suggested Dilutions	WB 1:500-1:2000 IHC 1:100-1:300 ELISA 1:5000 IF 1:50-200

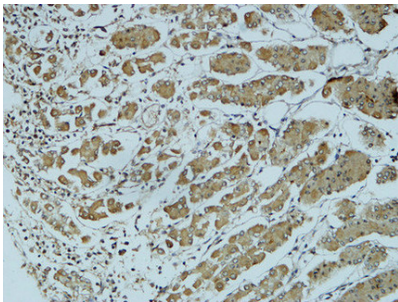
Anti-Cathepsin B CTSB Antibody (A01456-1) Images



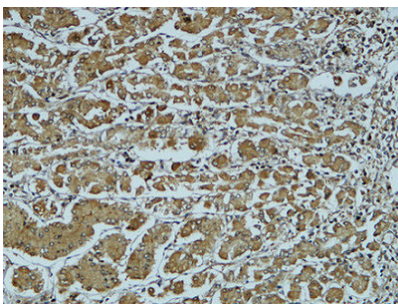
Western Blot analysis of various cells using Cathepsin B Polyclonal Antibody



Western blot analysis of lysate from COLO cells, using Cathepsin B antibody.

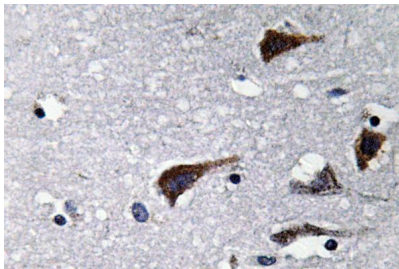
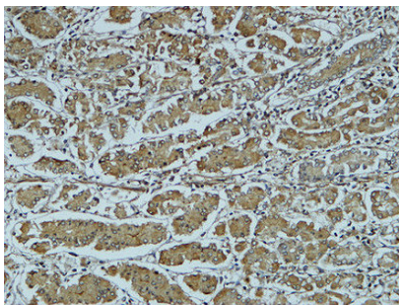


Immunohistochemical analysis of paraffin-embedded Human colon. 1, Antibody was diluted at 1:200 (4° overnight). 2, High-pressure and temperature EDTA, pH8.0 was used for antigen retrieval. 3, Secondary antibody was diluted at 1:200 (room temperature, 30min).



Immunohistochemical analysis of paraffin-embedded Human colon. 1, Antibody was diluted at 1:200 (4° overnight). 2, High-pressure and temperature EDTA, pH8.0 was used for antigen retrieval. 3, Secondary antibody was diluted at 1:200 (room temperature, 30min).

Immunohistochemical analysis of paraffin-embedded Human colon. 1, Antibody was diluted at 1:200 (4° overnight). 2, High-pressure and temperature EDTA, pH8.0 was used for antigen retrieval. 3, Secondary antibody was diluted at 1:200 (room temperature, 30min).



Immunohistochemistry analysis of Cathepsin B antibody in paraffin-embedded human brain tissue.

1 Publications Citing This Product

1. PubMed ID: 10.1021/acsami.9b13690, Elimination of Intracellular Calcium Overload by BAPTA-AM-Loaded Liposomes: A Promising Therapeutic Agent for Acute Liver Failure

Visit bosterbio.com/anti-cathepsin-b-antibody-a01456-1-boster.html to see all 1 publications.

Submit a product review to Biocompare.com

Submit a review of this product to Biocompare.com to receive a \$20 Amazon.com giftcard! Your reviews help your fellow scientists make the right decisions. Thank you for your contribution.



Anti-Cathepsin B CTSB Antibody

For Research Use Only. Not for use in diagnostic procedures.