

Anti-Raptor Rptor Antibody

Catalog Number: A01463-1

About RPTOR

The mammalian Target of Rapamycin (TOR, also known as mTOR) is an evolutionarily conserved serine/threonine kinase that regulates cell growth and cell cycle through its ability to integrate signals from nutrient levels and growth factors. Rapamycin inhibits TOR activity resulting in reduced cell growth and reduced rates of cell cycle and cell proliferation. Raptor (regulatory associated protein of TOR) is a TOR-binding protein essential for TOR signaling in vivo. It acts as a TOR scaffold protein whose binding by TOR substrates is necessary for effective TOR-catalyzed phosphorylation. These substrates include the ribosomal protein S6 kinase (RP S6K) and the eukaryotic initiation factor 4E binding protein 4EBP1, proteins necessary for cell growth and proliferation and responsive to nutrient and mitogen levels. Raptor binds these proteins through a common 5 amino acid TOR-signaling (TOS) motif; mutation of this motif prevents the TOR-dependent phosphorylation of these proteins.

Overview

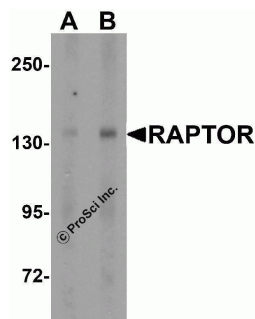
Product Name	Anti-Raptor Rptor Antibody
Reactive Species	Human, Mouse
Description	Boster Bio Anti-Raptor Rptor Antibody (Catalog # A01463-1). Tested in ELISA, WB, ICC, IF applications. This antibody reacts with Human, Mouse.
Application	ELISA, IF, ICC, WB
Clonality	Polyclonal
Formulation	Raptor Antibody is supplied in PBS containing 0.02% sodium azide.
Storage Instructions	Raptor antibody can be stored at 4°C for three months and -20°C, stable for up to one year. Avoid repeated freeze-thaw cycles. Antibodies should not be exposed to prolonged high temperatures.
Host	Rabbit
Uniprot ID	Q8K4Q0

Technical Details

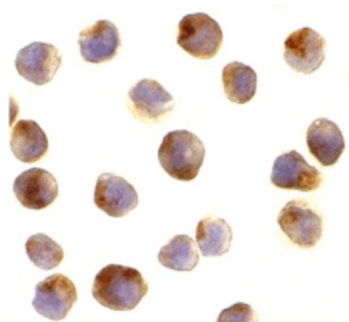
Immunogen	Raptor polyclonal antibody was raised against a 13 amino acid synthetic peptide from near the amino-terminus of human Raptor. The immunogen is located within amino acids 90 - 140 of Raptor.
Predicted Reactive Species	Human
Cross Reactivity	Raptor has multiple isoforms that may also be recognized by antibody.
Isotype	IgG
Form	Liquid
Concentration	1 mg/mL

Purification	Raptor Antibody is affinity chromatography purified via peptide column.
Suggested Dilutions	<p>Raptor antibody can be used for the detection of Raptor by Western blot at 2 and 4 ug/mL. Antibody can also be used for immunocytochemistry starting at 10 ug/mL. For immunofluorescence start at 10 ug/mL.</p> <p>Antibody validated: Western Blot in mouse samples; Immunocytochemistry in mouse samples and Immunofluorescence in mouse samples. All other applications and species not yet tested. Optimal dilutions for each application should be determined by the researcher.</p>

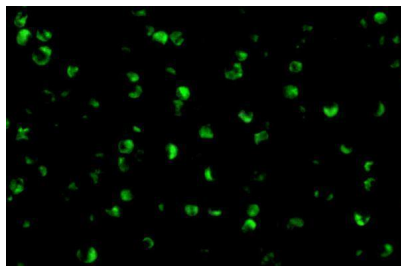
Anti-Raptor Rptor Antibody (A01463-1) Images



Western blot analysis of Raptor in L1210 cell lysate with Raptor antibody at (A) 2 and (B) 4 ug/mL.



Immunocytochemistry of RAPTOR in L1210 cells with RAPTOR antibody at 10 ug/mL.



Immunofluorescence of Raptor in L1210 cells with Raptor antibody at 10 ug/mL.

Submit a product review to [Biocompare.com](https://www.biocompare.com)

Submit a review of this product to [Biocompare.com](https://www.biocompare.com) to receive a \$20 Amazon.com giftcard! Your reviews help your fellow scientists make the right decisions. Thank you for your contribution.



Anti-Raptor Rptor Antibody

For Research Use Only. Not for use in diagnostic procedures.