

Anti-HTR1A Antibody (Center)

Catalog Number: A01467-1

About HTR1A

G-protein coupled receptor for 5-hydroxytryptamine (serotonin). Also functions as a receptor for various drugs and psychoactive substances. Ligand binding causes a conformation change that triggers signaling via guanine nucleotide-binding proteins (G proteins) and modulates the activity of down-stream effectors, such as adenylate cyclase. Beta-arrestin family members inhibit signaling via G proteins and mediate activation of alternative signaling pathways. Signaling inhibits adenylate cyclase activity and activates a phosphatidylinositol-calcium second messenger system that regulates the release of Ca(2+) ions from intracellular stores. Plays a role in the regulation of 5- hydroxytryptamine release and in the regulation of dopamine and 5- hydroxytryptamine metabolism. Plays a role in the regulation of dopamine and 5-hydroxytryptamine levels in the brain, and thereby affects neural activity, mood and behavior. Plays a role in the response to angiogenic stimuli.

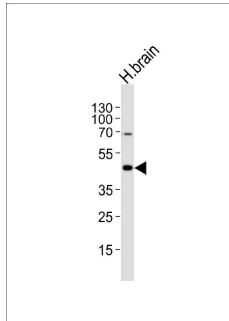
Overview

Product Name	Anti-HTR1A Antibody (Center)
Reactive Species	Human
Description	Boster Bio Anti-HTR1A Antibody (Center) (Catalog # A01467-1). Tested in WB, Flow Cytometry application(s). This antibody reacts with Human.
Application	Flow Cytometry, WB
Clonality	Polyclonal
Formulation	Purified polyclonal antibody supplied in PBS with 0.09% (W/V) sodium azide.
Storage Instructions	Maintain refrigerated at 2-8°C for up to 2 weeks. For long-term storage, store at -20°C in small aliquots to prevent freeze-thaw cycles.
Host	Rabbit
Uniprot ID	P08908

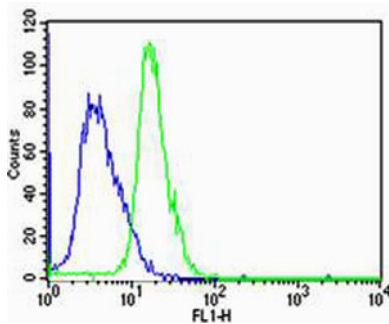
Technical Details

Immunogen	This HTR1A antibody is generated from a rabbit immunized with a KLH conjugated synthetic peptide between 239-273 amino acids from the Central region of human HTR1A.
Isotype	Rabbit IgG
Purification	This antibody is purified through a protein A column, followed by peptide affinity purification.
Suggested Dilutions	WB: 1:1000 FC: 1:25

Anti-HTR1A Antibody (Center) (A01467-1) Images



Western blot analysis of lysate from human brain tissue lysate, using HTR1A Antibody (Center). A01467-1 was diluted at 1:1000. A goat anti-rabbit IgG H&L (HRP) at 1:5000 dilution was used as the secondary antibody. Lysate at 35ug.



Flow cytometric analysis of Jurkat cells using HTR1A Antibody (Center)(green,) compared to an isotype control of rabbit IgG(blue). A01467-1 was diluted at 1:25 dilution. An Alexa Fluor® 488 goat anti-rabbit IgG at 1:400 dilution was used as the secondary antibody.

Submit a product review to [Biocompare.com](https://www.biocompare.com)

Submit a review of this product to [Biocompare.com](https://www.biocompare.com) to receive a \$20 Amazon.com giftcard! Your reviews help your fellow scientists make the right decisions. Thank you for your contribution.



Anti-HTR1A Antibody (Center)

For Research Use Only. Not for use in diagnostic procedures.