

## Anti-TRPC3 Antibody

Catalog Number: A01472-1

### About TRPC3

The mammalian transient receptor potential (TRP) superfamily can be divided into three major families including the "canonical TRP" (TRPC) family. The seven members of this family share the activation through PLC-coupled receptors and have been suggested to be components of receptor-regulated cation channels in different cell types. Furthermore, the members of the TRPC3/6/7 subfamily can be activated by diacylglycerol analogs, suggesting a possible mechanism of activation of these channels by PLC-coupled receptors. TRPC3 encodes a Ca<sup>2+</sup>-permeant channel that is agonist-activated but not store-operated or directly receptor-activated. TRPC3 physically interacts with TRPC6 and TRPC7 and forms functional tetrameric channels.

### Overview

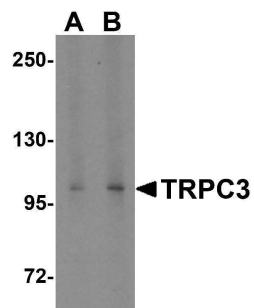
Product Name	Anti-TRPC3 Antibody
Reactive Species	Human
Description	Boster Bio Anti-TRPC3 Antibody (Catalog # A01472-1). Tested in ELISA, WB, IHC-P applications. This antibody reacts with Human.
Application	ELISA, IHC-P, WB
Clonality	Polyclonal
Formulation	TRPC3 Antibody is supplied in PBS containing 0.02% sodium azide.
Storage Instructions	Antibody can be stored at 4°C up to one year. Antibodies should not be exposed to prolonged high temperatures.
Host	Rabbit
Uniprot ID	Q13507

### Technical Details

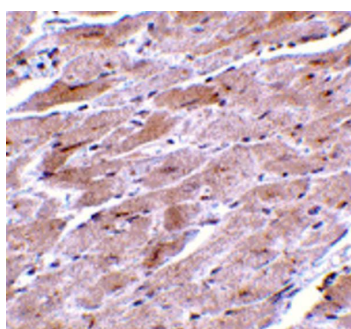
Immunogen	TRPC3 antibody was raised against a 14 amino acid synthetic peptide from near the amino terminus of human TRPC3. The immunogen is located within amino acids 120 - 170 of TRPC3.
Predicted Reactive Species	Rat
Cross Reactivity	This antibody may cross-react with TRPC6 and TRPC7.
Isotype	IgG
Form	Liquid
Concentration	1 mg/mL

Purification	TRPC3 Antibody is affinity chromatography purified via peptide column.
Suggested Dilutions	TRPC3 antibody can be used for the detection of TRPC3 by Western blot at 1 - 2 ug/mL. Antibody can also be used for immunohistochemistry starting at 10 ug/mL. Antibody validated: Western Blot in human samples and Immunohistochemistry in mouse samples. All other applications and species not yet tested. Optimal dilutions for each application should be determined by the researcher.

## Anti-TRPC3 Antibody (A01472-1) Images



Western blot analysis of TRPC3 in human heart tissue lysate with TRPC3 antibody at (A) 1 and (B) 2 ug/mL.



Immunohistochemistry of TRPC3 in mouse heart tissue with TRPC3 antibody at 10 ug/mL.

### Submit a product review to [Biocompare.com](https://www.biocompare.com)

Submit a review of this product to [Biocompare.com](https://www.biocompare.com) to receive a \$20 Amazon.com giftcard! Your reviews help your fellow scientists make the right decisions. Thank you for your contribution.



Anti-TRPC3 Antibody

For Research Use Only. Not for use in diagnostic procedures.