

Anti-S6K1/RPS6KB1 Antibody Picoband®

Catalog Number: A01475-2

About RPS6KB1

Ribosomal protein S6 kinase beta-1 (S6K1), also known as p70S6 kinase (p70S6K, p70-S6K), is an enzyme (specifically, a protein kinase) that in humans is encoded by the RPS6KB1 gene. This gene encodes a member of the ribosomal S6 kinase family of serine/threonine kinases. The encoded protein responds to mTOR (mammalian target of rapamycin) signaling to promote protein synthesis, cell growth, and cell proliferation. Activity of this gene has been associated with human cancer. Alternatively spliced transcript variants have been observed. The use of alternative translation start sites results in isoforms with longer or shorter N-termini which may differ in their subcellular localizations. There are two pseudogenes for this gene on chromosome 17.

Overview

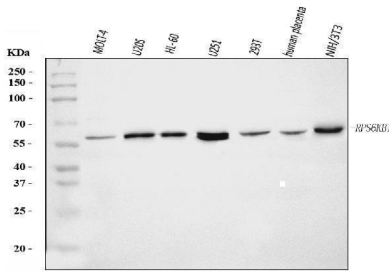
| | |
|----------------------|--|
| Product Name | Anti-S6K1/RPS6KB1 Antibody Picoband® |
| Reactive Species | Human, Mouse |
| Description | Boster Bio Anti-S6K1/RPS6KB1 Antibody Picoband® catalog # A01475-2. Tested in Flow Cytometry, WB applications. This antibody reacts with Human, Mouse. The brand Picoband indicates this is a premium antibody that guarantees superior quality, high affinity, and strong signals with minimal background in Western blot applications. Only our best-performing antibodies are designated as Picoband, ensuring unmatched performance. |
| Application | Flow Cytometry, WB |
| Clonality | Polyclonal |
| Formulation | Each vial contains 4 mg Trehalose, 0.9 mg NaCl, 0.2 mg Na ₂ HPO ₄ . |
| Storage Instructions | At -20°C for one year from date of receipt. After reconstitution, at 4°C for one month. It can also be aliquotted and stored frozen at -20°C for six months. Avoid repeated freezing and thawing. |
| Host | Rabbit |
| Uniprot ID | P23443 |

Technical Details

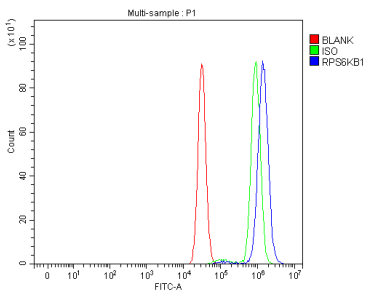
| | |
|-------------------------------|---|
| Immunogen | A synthetic peptide corresponding to a sequence in the middle region of human S6K1/RPS6KB1, identical to the related mouse and rat sequences. |
| Recommended Detection Systems | Boster recommends Enhanced Chemiluminescent Kit with anti-Rabbit IgG (EK1002) for Western blot. |
| Cross Reactivity | No cross-reactivity with other proteins. |
| Isotype | Rabbit IgG |

| | |
|---------------------|---|
| Form | Lyophilized |
| Concentration | Adding 0.2 ml of distilled water will yield a concentration of 500 ug/ml. |
| Purification | Immunogen affinity purified. |
| Suggested Dilutions | Western blot, 0.25-0.5 ug/ml, Human, Mouse Flow Cytometry (Fixed), 1-3 ug/1x10 ⁶ cells, Human |

Anti-S6K1/RPS6KB1 Antibody Picoband® (A01475-2) Images



Western blot analysis of S6K1/RPS6KB1 using anti-S6K1/RPS6KB1 antibody (A01475-2). Electrophoresis was performed on a 5-20% SDS-PAGE gel at 70V (Stacking gel) / 90V (Resolving gel) for 2-3 hours. The sample well of each lane was loaded with 30 ug of sample under reducing conditions. Lane 1: human MOLT4 whole cell lysates, Lane 2: human U20S whole cell lysates, Lane 3: human HL-60 whole cell lysates, Lane 4: human U251 whole cell lysates, Lane 5: human 293T whole cell lysates, Lane 6: human placenta tissue lysates, Lane 7: mouse NIH/3T3 whole cell lysates. After electrophoresis, proteins were transferred to a nitrocellulose membrane at 150 mA for 50-90 minutes. Blocked the membrane with 5% non-fat milk/TBS for 1.5 hour at RT. The membrane was incubated with rabbit anti-S6K1/RPS6KB1 antigen affinity purified polyclonal antibody (Catalog # A01475-2) at 0.5 ug/mL overnight at 4°C, then washed with TBS-0.1%Tween 3 times with 5 minutes each and probed with a goat anti-rabbit IgG-HRP secondary antibody at a dilution of 1:5000 for 1.5 hour at RT. The signal is developed using an Enhanced Chemiluminescent detection (ECL) kit (Catalog # EK1002) with Tanon 5200 system. A specific band was detected for S6K1/RPS6KB1 at approximately 59 kDa. The expected band size for S6K1/RPS6KB1 is at 59 kDa.



Flow Cytometry analysis of MCF-7 cells using anti-S6K1/RPS6KB1 antibody (A01475-2). Overlay histogram showing MCF-7 cells stained with A01475-2 (Blue line). To facilitate intracellular staining, cells were fixed with 4% paraformaldehyde and permeabilized with permeabilization buffer. The cells were blocked with 10% normal goat serum. And then incubated with rabbit anti-S6K1/RPS6KB1 Antibody (A01475-2, 1 ug/1x10⁶ cells) for 30 min at 20°C. DyLight®488 conjugated goat anti-rabbit IgG (BA1127, 5-10 ug/1x10⁶ cells) was used as secondary antibody for 30 minutes at 20°C. Isotype control antibody (Green line) was rabbit IgG (1 ug/1x10⁶) used under the same conditions. Unlabelled sample without incubation with primary antibody and secondary antibody (Red line) was used as a blank control.

1 Publications Citing This Product

1. PubMed ID: 10.1007/s10495-017-1391-1, Multi-targeted therapy of everolimus in Kaposi's sarcoma associated herpes virus infected primary effusion lymphoma

Visit bosterbio.com/anti-s6k1-rps6kb1-picoband-trade-antibody-a01475-2-boster.html to see all 1 publications.

Submit a product review to Biocompare.com

Submit a review of this product to Biocompare.com to receive a \$20 Amazon.com giftcard! Your



reviews help your fellow scientists make the right decisions. Thank you for your contribution.

Anti-S6K1/RPS6KB1 Antibody

For Research Use Only. Not for use in diagnostic procedures.