

Anti-Flap endonuclease 1 FEN1 Antibody

Catalog Number: A01484

About FEN1

Structure-specific nuclease with 5'-flap endonuclease and 5'-3' exonuclease activities involved in DNA replication and repair. During DNA replication, cleaves the 5'-overhanging flap structure that is generated by displacement synthesis when DNA polymerase encounters the 5'-end of a downstream Okazaki fragment. It enters the flap from the 5'-end and then tracks to cleave the flap base, leaving a nick for ligation. Also involved in the long patch base excision repair (LP-BER) pathway, by cleaving within the apurinic/aprimidinic (AP) site-terminated flap. Acts as a genome stabilization factor that prevents flaps from equilibrating into structures that lead to duplications and deletions. Also possesses 5'-3' exonuclease activity on nicked or gapped double-stranded DNA, and exhibits RNase H activity. Also involved in replication and repair of rDNA and in repairing mitochondrial DNA.

Murray J.M., Mol. Cell. Biol. 14:4878-4888(1994).

Hiraoka L.R., Genomics 25:220-225(1995).

Taylor T.D., Nature 440:497-500(2006).

Overview

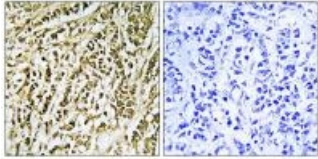
| | |
|----------------------|--|
| Product Name | Anti-Flap endonuclease 1 FEN1 Antibody |
| Reactive Species | Human, Mouse, Rat |
| Description | Boster Bio Anti-Flap endonuclease 1 FEN1 Antibody (Catalog # A01484). Tested in WB, IHC, IF applications. This antibody reacts with Human, Mouse, Rat. |
| Application | IF, IHC, WB |
| Clonality | Polyclonal |
| Formulation | Rabbit IgG in phosphate buffered saline (without Mg ²⁺ and Ca ²⁺), pH 7.4, 150mM NaCl, 0.02% sodium azide and 50% glycerol. |
| Storage Instructions | Store at -20°C for one year. For short term storage and frequent use, store at 4°C for up to one month. Avoid repeated freeze-thaw cycles. |
| Host | Rabbit |
| Uniprot ID | P39748 |

Technical Details

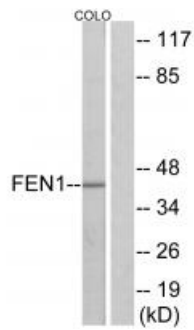
| | |
|----------------------------|--|
| Immunogen | Synthesized peptide derived from internal of human FEN1. |
| Predicted Reactive Species | Boar, Bovine, Canine, Golden Hamster |
| Cross Reactivity | No cross reactivity with other proteins. |

| | |
|---------------------|--|
| Isotype | IgG |
| Form | Liquid |
| Concentration | 1 mg/ml |
| Purification | The antibody was affinity-purified from rabbit antiserum by affinity-chromatography using epitope-specific immunogen. |
| Suggested Dilutions | <p>Dilute the sample so that the expected range of concentrations fall within the detection range of this kit.</p> <p>If the expected range of concentration is unknown, a pilot test should be conducted to decide the optimal dilution ratio for your samples.</p> <p>Some PubMed article(s) citing the expression level of this target are as follows:</p> <p>Boster Bio's internal QC testing used:</p> <p>Western blotting: 1:500~1:3000</p> <p>Immunohistochemistry: 1:50~1:100</p> <p>Immunofluorescence: 1:100~1:500</p> |

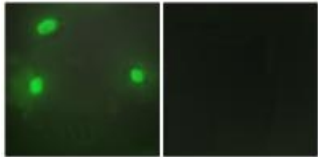
Anti-Flap endonuclease 1 FEN1 Antibody (A01484) Images



Immunohistochemistry analysis of paraffin-embedded human breast carcinoma tissue using FEN1 antibody A01484.



Western blot analysis of extracts from Jurkat cells, 293 cells and HUVEC cells, using FEN1 antibody A01484.



Immunofluorescence analysis of HeLa cells, using FEN1 antibody A01484.

Submit a product review to [Biocompare.com](https://www.biocompare.com)

Submit a review of this product to [Biocompare.com](https://www.biocompare.com) to receive a \$20 Amazon.com giftcard! Your reviews help your fellow scientists make the right decisions. Thank you for your contribution.



Anti-Flap endonuclease 1 FEN1 Antibody