

Anti-Ctip2 BCL11B Antibody

Catalog Number: A01485

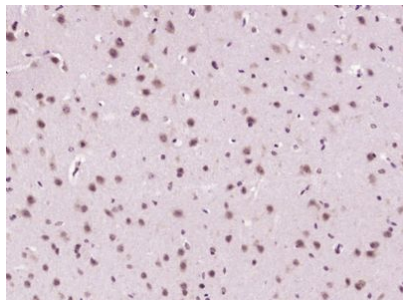
Overview

Product Name	Anti-Ctip2 BCL11B Antibody
Reactive Species	Mouse
Description	Boster Bio Anti-Ctip2 BCL11B Antibody catalog # A01485. Tested in WB,IHC,IF,ICC,ELISA applications. This antibody reacts with Mouse.
Application	ELISA, IF, IHC, ICC, WB
Clonality	Polyclonal
Formulation	Rabbit IgG, 1mg/ml in PBS with 0.02% sodium azide, 50% glycerol, pH7.2
Storage Instructions	Store at -20°C for one year. For short term storage and frequent use, store at 4°C for up to one month. Avoid repeated freeze-thaw cycles.
Host	Rabbit
Uniprot ID	Q9C0K0

Technical Details

Immunogen	KLH conjugated synthetic peptide derived from human Ctip2 : 331-4630/894
Cross Reactivity	No cross reactivity with other proteins.
Isotype	IgG
Form	Liquid
Concentration	1 mg/ml
Purification	ProA affinity purified
Suggested Dilutions	WB: 1:500-1:2000 IHC: 1:100-1:500 IF: 1:100-1:500 ICC: 1:100-1:500 ELISA: 1:5000-1:10000

Anti-Ctip2 BCL11B Antibody (A01485) Images



Paraformaldehyde-fixed, paraffin embedded (Mouse brain); Antigen retrieval by boiling in sodium citrate buffer (pH6.0) for 15min; Block endogenous peroxidase by 3% hydrogen peroxide for 20 minutes; Blocking buffer (normal goat serum) at 37°C for 30min; Antibody incubation with (Ctip2) Polyclonal Antibody, Unconjugated at 1:400 overnight at 4°C.

Submit a product review to Biocompare.com

Submit a review of this product to Biocompare.com to receive a \$20 Amazon.com giftcard! Your reviews help your fellow scientists make the right decisions. Thank you for your contribution.



Anti-Ctip2 BCL11B Antibody

For Research Use Only. Not for use in diagnostic procedures.