

Anti-c-Met (phospho-Y1349) Antibody

Catalog Number: A01488Y1349

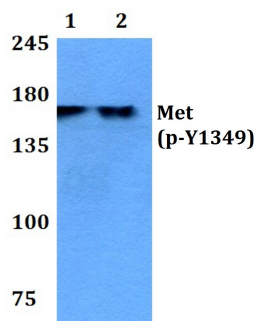
Overview

Product Name	Anti-c-Met (phospho-Y1349) Antibody
Reactive Species	Human, Mouse, Rat
Description	Boster Bio Anti-c-Met (phospho-Y1349) Antibody catalog # A01488Y1349. Tested in WB applications. This antibody reacts with Human, Mouse, Rat.
Application	WB
Clonality	Polyclonal
Formulation	Rabbit IgG, 1mg/ml in PBS with 0.02% sodium azide, 50% glycerol, pH7.2
Storage Instructions	Store at -20°C for one year. For short term storage and frequent use, store at 4°C for up to one month. Avoid repeated freeze-thaw cycles.
Host	Rabbit
Uniprot ID	P08581

Technical Details

Immunogen	Synthetic phosphopeptide derived from human c-Met around the phosphorylation site of Tyrosine 1349.
Cross Reactivity	No cross reactivity with other proteins.
Isotype	IgG
Form	Liquid
Concentration	1 mg/ml
Purification	The antibody was affinity-purified from rabbit antiserum by affinity-chromatography using epitope-specific immunogen and the purity is > 95% (by SDS-PAGE).
Suggested Dilutions	WB: 1:500-1:1000

Anti-c-Met (phospho-Y1349) Antibody (A01488Y1349) Images



Western blot (WB) analysis of p-Met (Y1349) polyclonal antibody at 1:500 dilution Lane1:THP-1 cell lysate treated with EGF(0.1ng/ml,30mins) Lane2:HeLa cell lysate treated with EGF(0.1ng/ml,30mins)

Submit a product review to Biocompare.com

Submit a review of this product to Biocompare.com to receive a \$20 Amazon.com giftcard! Your reviews help your fellow scientists make the right decisions. Thank you for your contribution.



Anti-c-Met (phospho-Y1349) Antibody

For Research Use Only. Not for use in diagnostic procedures.