

## Anti-S1P1 S1PR1 Antibody

Catalog Number: A01502

### About S1PR1

Movement of lymphocytes through lymphoid organs is required for generating immunity. Their migration into lymph nodes follows a series of events including integrin activation through chemokine signaling, adhesion and diapedis. The release of lymphocytes from lymph nodes is regulated by the phospholipid sphingosine-1-phosphate (S1P). One of its receptors S1P1 binds S1P with high specificity and affinity; agonism of this receptor by the immunosuppressive agent FTY720 inhibits the entry of tissue T cells into afferent lymphatics in homeostatic and inflammatory conditions. Recent experiments have indicated that CCR7-deficient T cells left lymph nodes more rapidly than wild-type cells did and these cells were also less effectively retained after treatment with FTY720, and that egress competence could be restored by inactivating G alpha i-protein-coupled receptor signaling. These results suggest that S1P1 acts in the lymphocyte to promote lymph node egress by overcoming retention signals mediated by CCR7 and G alpha i-protein-coupled receptor signaling.

### Overview

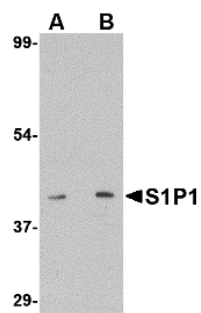
Product Name	Anti-S1P1 S1PR1 Antibody
Reactive Species	Human, Mouse, Rat
Description	Boster Bio Anti-S1P1 S1PR1 Antibody (Catalog # A01502). Tested in ELISA, WB, IHC-P, IF applications. This antibody reacts with Human, Mouse, Rat.
Application	ELISA, IF, IHC-P, WB
Clonality	Polyclonal
Formulation	S1P1 Antibody is supplied in PBS containing 0.02% sodium azide.
Storage Instructions	S1P1 antibody can be stored at 4°C for three months and -20°C, stable for up to one year. Avoid repeated freeze-thaw cycles. Antibodies should not be exposed to prolonged high temperatures.
Host	Rabbit
Uniprot ID	P21453

### Technical Details

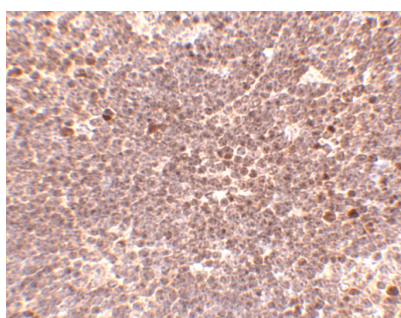
Immunogen	S1P1 antibody was raised against a 14 amino acid synthetic peptide near the carboxy terminus of the human S1P1. The immunogen is located within the last 50 amino acids of S1P1.
Predicted Reactive Species	Bovine
Cross Reactivity	At least two isoforms of S1P1 are known to exist; this S1P1 antibody will only recognize the shorter isoform.
Isotype	IgG
Form	Liquid

Concentration	1 mg/mL
Purification	S1P1 Antibody is affinity chromatography purified via peptide column.
Suggested Dilutions	S1P1 antibody can be used for detection of S1P1 by Western blot at 1 - 2 ug/mL. Antibody can also be used for immunohistochemistry starting at 2.5 ug/mL. Antibody validated: Western Blot in mouse samples; Immunohistochemistry in mouse samples and Immunofluorescence in mouse samples. All other applications and species not yet tested. Optimal dilutions for each application should be determined by the researcher.

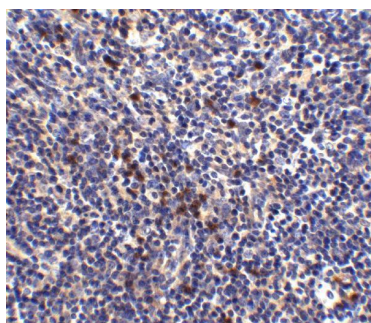
## Anti-S1P1 S1PR1 Antibody (A01502) Images



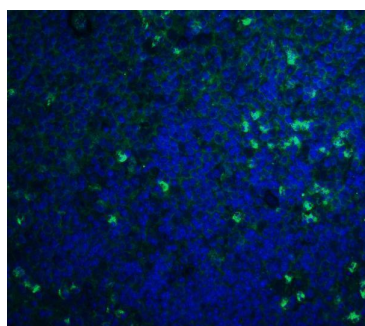
Western blot analysis of S1P1 in mouse thymus lysate with S1P1 antibody at (A) 1 and (B) 2 ug/mL.



Immunohistochemistry of S1P1 in mouse thymus tissue with S1P1 antibody at 5 ug/mL.



Immunohistochemistry of S1P1 in mouse thymus tissue with S1P1 antibody at 2.5 ug/mL.



Immunofluorescence of S1P1 in mouse thymus tissue with S1P1 antibody at 20 ug/mL. Green: S1P1 Antibody (A01502)  
Blue: DAPI staining

Submit a product review to [Biocompare.com](https://www.biocompare.com)

Submit a review of this product to [Biocompare.com](https://www.biocompare.com) to receive a \$20 Amazon.com giftcard! Your reviews help your fellow scientists make the right decisions. Thank you for your contribution.



Anti-S1P1 S1PR1 Antibody

For Research Use Only. Not for use in diagnostic procedures.