

## Anti-PSA (L106) KLK3 Antibody

Catalog Number: A01505-1

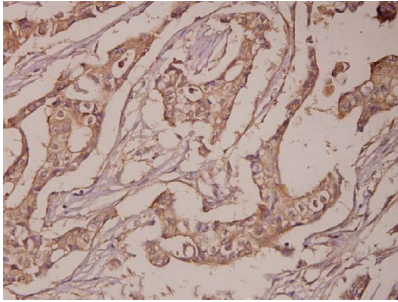
### Overview

Product Name	Anti-PSA (L106) KLK3 Antibody
Reactive Species	Human, Mouse, Rat
Description	Boster Bio Anti-PSA (L106) KLK3 Antibody catalog # A01505-1. Tested in IHC,IF applications. This antibody reacts with Human,Mouse,Rat.
Application	IF, IHC
Clonality	Polyclonal
Formulation	Rabbit IgG, 1mg/ml in PBS with 0.02% sodium azide, 50% glycerol, pH7.2
Storage Instructions	Store at -20°C for one year. For short term storage and frequent use, store at 4°C for up to one month. Avoid repeated freeze-thaw cycles.
Host	Rabbit
Uniprot ID	P07288

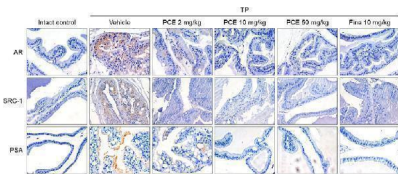
### Technical Details

Immunogen	Synthetic peptide, corresponding to amino acids 81-130 of Human PSA.
Cross Reactivity	No cross reactivity with other proteins.
Isotype	IgG
Form	Liquid
Concentration	1 mg/ml
Purification	The antibody was affinity-purified from rabbit antiserum by affinity-chromatography using epitope-specific immunogen and the purity is > 95% (by SDS-PAGE).
Suggested Dilutions	IHC: 1:50-1:200 IF: 1:50-1:200

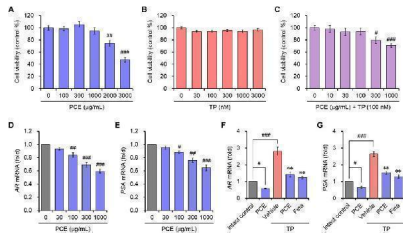
## Anti-PSA (L106) KLK3 Antibody (A01505-1) Images



Immunohistochemistry (IHC) analyzes of PSA (L106) pAb in paraffin-embedded human breast carcinoma tissue at 1:50.



Effect of PCE on AR signaling-related protein expression in rats with TP-induced BPH. Immunohistochemical analyses were performed using anti-AR, anti-SRC-1, and anti-PSA antibodies. Representative images are presented in the original magnification  $\times 60$ . Fina, finasteride; TP, testosterone propionate. Index in PubMed under a CC BY license. PMID: 39830338



Cell viability and the mRNA expression of AR and PSA in LNCaP cells. (A–C) Cells were incubated with various concentrations of (A) PCE, (B) TP, or (C) various concentrations with PCE in the presence of 100 nM TP for 24 h, and their viability was determined. The results are expressed as percentages of the control and are presented as means  $\pm$  SEMs (n = 3). # p < 0.05, ## p < 0.005, and ### p < 0.0005 versus the vehicle-treated control group. (D–G) Cells were incubated with the indicated concentrations of PCE, or either 1,000 ug/mL PCE or 10 ug/mL finasteride for 24 h in the presence or absence of 100 nM TP. Total RNA was extracted, and the mRNA expression of (D, F) AR and (E, G) PSA was analyzed using quantitative real-time PCR. The results are expressed as relative values compared to the vehicle-treated control and are presented as means  $\pm$  SEMs (n = 3). # p < 0.05, ## p < 0.005, and ### p < 0.0005 versus the vehicle-treated control group. \*\* p < 0.005 versus the TP-treated group. Fina, finasteride; TP, testosterone propionate. Index in PubMed under a CC BY license. PMID: 39830338

Submit a product review to [Biocompare.com](https://www.biocompare.com)

Submit a review of this product to [Biocompare.com](https://www.biocompare.com) to receive a \$20 Amazon.com giftcard! Your reviews help your fellow scientists make the right decisions. Thank you for your contribution.



Anti-PSA (L106) KLK3 Antibody

For Research Use Only. Not for use in diagnostic procedures.