

## Anti-PSA KLK3 Antibody

Catalog Number: A01505-2

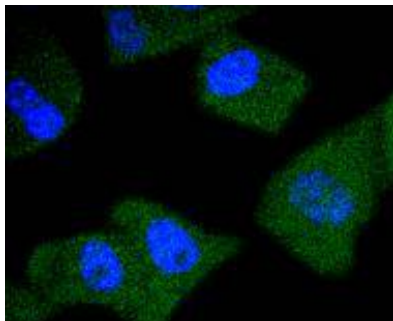
### Overview

Product Name	Anti-PSA KLK3 Antibody
Reactive Species	Human
Description	Boster Bio Anti-PSA KLK3 Antibody catalog # A01505-2. Tested in WB,ICC/IF,IHC applications. This antibody reacts with Human.
Application	IF, IHC, ICC, WB
Clonality	Polyclonal
Formulation	Rabbit IgG, 1mg/ml in PBS with 0.02% sodium azide, 50% glycerol, pH7.2
Storage Instructions	Store at -20°C for one year. For short term storage and frequent use, store at 4°C for up to one month. Avoid repeated freeze-thaw cycles.
Host	Rabbit
Uniprot ID	P07288

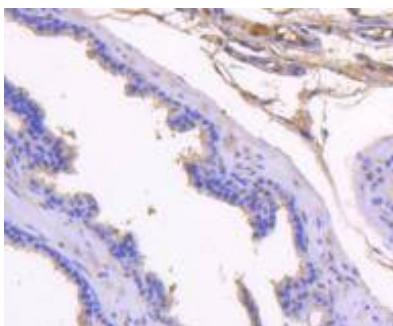
### Technical Details

Immunogen	recombinant protein
Cross Reactivity	No cross reactivity with other proteins.
Isotype	IgG
Form	Liquid
Concentration	1 mg/ml
Purification	ProA affinity purified
Suggested Dilutions	WB: 1:1,000 ICC: 1:50-1:200 IHC: 1:50-1:200

## Anti-PSA KLK3 Antibody (A01505-2) Images



ICC staining PSA in PC-3M cells (green). The nuclear counter stain is DAPI (blue). Cells were fixed in paraformaldehyde, permeabilised with 0.25% Triton X100/PBS.



Immunohistochemical analysis of paraffin-embedded mouse prostate tissue using anti-PSA antibody. Counter stained with hematoxylin.

## Submit a product review to Biocompare.com

Submit a review of this product to Biocompare.com to receive a \$20 Amazon.com giftcard! Your reviews help your fellow scientists make the right decisions. Thank you for your contribution.



Anti-PSA KLK3 Antibody

For Research Use Only. Not for use in diagnostic procedures.