

Anti-CXCR1 Antibody

Catalog Number: A01518

About CXCR1

Anti-CD31 antibody was designed, produced, and validated as part of the Joy Cappel Young Investigator Award (JCYIA). CD31 (PECAM-1) is a 130 kDa platelet endothelial cell adhesion molecule encoded by the PECAM1 gene found on chromosome 17 in humans. CD31 is expressed on platelets, monocytes, neutrophils, and some types of T-cells, and makes up a large portion of endothelial cell intercellular junctions. CD31 plays a key role in modulation of integrin-mediated cell adhesion, leukocyte transendothelial migration, angiogenesis, apoptosis and macrophage phagocytosis. CD31 is also expressed in certain tumors, including epithelioid hemangioendothelioma, epithelioid sarcoma-like hemangioendothelioma, other vascular tumors, histiocytic malignancies, and plasmacytomas. Anti-CD31 is ideal for researchers interested in Stem Cell Research, Epigenetics, and Cell-cycle Regulation research.

Overview

Product Name	Anti-CXCR1 Antibody
Reactive Species	Human, Mouse, Rat
Description	Boster Bio Anti-CXCR1 Antibody catalog # A01518. Tested in WB applications. This antibody reacts with Human, Mouse, Rat.
Application	WB
Clonality	Polyclonal
Formulation	Rabbit IgG, 1mg/ml in PBS with 0.02% sodium azide, 50% glycerol, pH7.2
Storage Instructions	Store at -20°C for one year. For short term storage and frequent use, store at 4°C for up to one month. Avoid repeated freeze-thaw cycles.
Host	Rabbit
Uniprot ID	P25024

Technical Details

Immunogen	Synthesized peptide derived from human CD31 around the phosphorylation site of Y713.
Predicted Reactive Species	Boar, Bovine, Canine, Golden Hamster
Cross Reactivity	No cross reactivity with other proteins.
Isotype	IgG
Form	Liquid
Concentration	1 mg/ml

Purification	The antibody was affinity-purified from rabbit antiserum by affinity-chromatography using epitope-specific immunogen and the purity is > 95% (by SDS-PAGE).
Suggested Dilutions	<p>Dilute the sample so that the expected range of concentrations fall within the detection range of this kit.</p> <p>If the expected range of concentration is unknown, a pilot test should be conducted to decide the optimal dilution ratio for your samples.</p> <p>Some PubMed article(s) citing the expression level of this target are as follows:</p> <p>Boster Bio's internal QC testing used:</p> <p>WB: 1:500-1:1000</p>

Anti-CXCR1 Antibody (A01518) Images

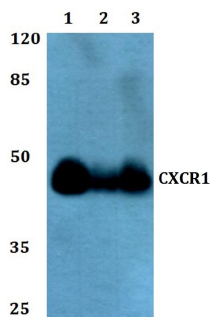


Figure 1. Western blotting validation for Anti-CXCR1 Antibody A01518

Western blot (WB) analysis of CXCR1 polyclonal antibody at 1:500 dilution

Lane1:HEK293T whole cell lysate

Lane2:NIH-3T3 whole cell lysate

Lane3:H9C2 whole cell lysate

Electrophoresis was performed on a SDS-PAGE gel. To determine SDS-PAGE gel concentration

Submit a product review to Biocompare.com

Submit a review of this product to Biocompare.com to receive a \$20 Amazon.com giftcard! Your reviews help your fellow scientists make the right decisions. Thank you for your contribution.



Anti-CXCR1 Antibody