

Anti-MAP1LC3B Antibody

Catalog Number: A01524

About MAP1LC3B

Microtubule-associated proteins (MAPs) regulate microtubule stability and play critical roles in neuronal development and plasticity (1). MAP1LC3B belongs to the MAP1 LC3 family and it includes 3 different light chains, LC1, LC2 and LC3 (2). MAP1LC3B is involved in formation of autophagosomal vacuoles (autophagosomes) (3). It is most abundant in heart, brain, skeletal muscle and testis. MAP1LC3B is essential for autophagy and associated to the autophagosome membranes after processing (4).

Overview

Product Name	Anti-MAP1LC3B Antibody
Reactive Species	Human, Mouse, Rat
Description	Boster Bio Anti-MAP1LC3B Antibody (Catalog # A01524). Tested in ELISA, WB, IHC-P, IF applications. This antibody reacts with Human, Mouse, Rat.
Application	ELISA, IF, IHC-P, WB
Clonality	Polyclonal
Formulation	MAP1LC3B antibody is supplied in PBS containing 0.02% sodium azide.
Storage Instructions	Antibody can be stored at 4°C up to one year. Antibodies should not be exposed to prolonged high temperatures.
Host	Rabbit
Uniprot ID	Q9GZQ8

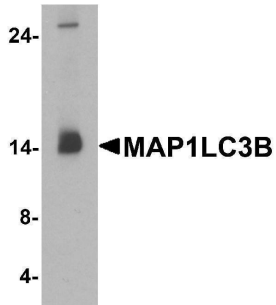
Technical Details

Immunogen	MAP1LC3B antibody was raised against an 18 amino acid peptide near the amino terminus of human MAP1LC3B. The immunogen is located within the first 50 amino acids of MAP1LC3B.
Predicted Reactive Species	Bovine
Cross Reactivity	MAP1LC3B antibody is human, mouse and rat reactive. Multiple isoforms MAP1LC3B are known to exist. MAP1LC3B antibody is predicted to not cross-react with MAP1LC3A or MAP1LC3C
Isotype	IgG
Form	Liquid
Concentration	1 mg/mL
Purification	MAP1LC3B antibody is affinity chromatography purified via peptide column.

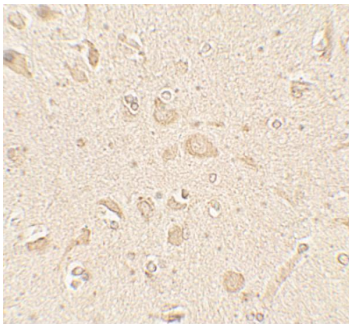
Suggested Dilutions

MAP1LC3B antibody can be used for detection of MAP1LC3B by Western blot at 1 - 2 ug/ml. Antibody can also be used for Immunohistochemistry starting at 5 ug/mL. For immunofluorescence start at 20 ug/mL.
Antibody validated: Western Blot in human samples; Immunohistochemistry in human samples and Immunofluorescence in human samples. All other applications and species not yet tested. Optimal dilutions for each application should be determined by the researcher.

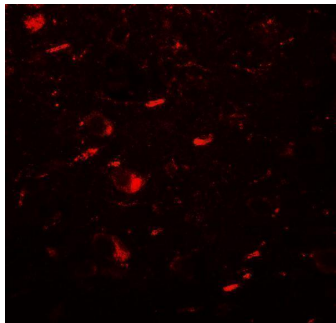
Anti-MAP1LC3B Antibody (A01524) Images



Western blot analysis of MAP1LC3B in human brain tissue lysate with MAP1LC3B antibody at 1 ug/ml.



Immunohistochemistry of MAP1LC3B in human brain tissue with MAP1LC3B antibody at 5 ug/mL.



Immunofluorescence of MAP1LC3B in human brain tissue with MAP1LC3B antibody at 20 ug/mL.

1 Publications Citing This Product

1. PubMed ID: -, Zhang Tao,Xiaoqing Zhou,Yan Zhang,Wenfeng Pu,Yi Yang,Fuxia Wei,Qian Zhou,Lin Zhang,Zhonghan Du,Ji Wu,"Xi Lei San Attenuates Dextran Sulfate Sodium-Induced Colitis in Rats and TNF-alpha-Stimulated Colitis in CACO2 Cells: Involvement of the NLRP3 Inflammasome and Autophagy",Mediators of Inflammation,vol. 2021, Article ID 1610251,12 pages,2021.https://doi.org/10.1155/2021/1610251

Visit bosterbio.com/anti-map1lc3b-antibody-a01524-boster.html to see all 1 publications.

Submit a product review to Biocompare.com

Submit a review of this product to Biocompare.com to receive a \$20 Amazon.com giftcard! Your reviews help your fellow scientists make the right decisions. Thank you for your contribution.



For Research Use Only. Not for use in diagnostic procedures.