

Anti-LC3 (T50) MAP1LC3B Antibody

Catalog Number: A01524T50

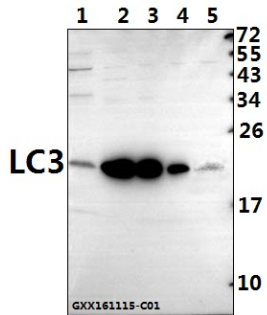
Overview

Product Name	Anti-LC3 (T50) MAP1LC3B Antibody
Reactive Species	Human, Mouse, Rat
Description	Boster Bio Anti-LC3 (T50) MAP1LC3B Antibody catalog # A01524T50. Tested in WB applications. This antibody reacts with Human, Mouse, Rat.
Application	WB
Clonality	Polyclonal
Formulation	Rabbit IgG, 1mg/ml in PBS with 0.02% sodium azide, 50% glycerol, pH7.2
Storage Instructions	Store at -20°C for one year. For short term storage and frequent use, store at 4°C for up to one month. Avoid repeated freeze-thaw cycles.
Host	Rabbit
Uniprot ID	Q9GZQ8/Q9H492/Q9BXW4

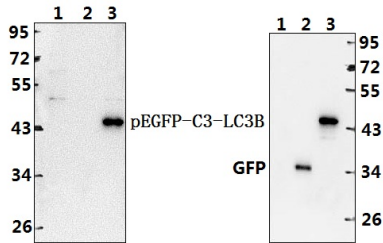
Technical Details

Immunogen	A synthetic peptide corresponding to residues in Human LC3.
Cross Reactivity	No cross reactivity with other proteins.
Isotype	IgG
Form	Liquid
Concentration	1 mg/ml
Purification	The antibody was affinity-purified from rabbit antiserum by affinity-chromatography using epitope-specific immunogen and the purity is > 95% (by SDS-PAGE).
Suggested Dilutions	WB: 1:500-1:1000

Anti-LC3 (T50) MAP1LC3B Antibody (A01524T50) Images



Western blot (WB) analysis of LC3 (T50) polyclonal antibody at 1:500 dilution Lane1:BV2 whole cell lysate(40ug) Lane2:SGC7901 whole cell lysate(40ug) Lane3:SK-OVCAR3 whole cell lysate(10ug) Lane4:L02 whole cell lysate(10ug) Lane5:HEK293T whole cell lysate(40ug)



Western blot (WB) analysis of LC3 (T50) pAb at 1:500 dilution Lane1:HEK293T whole cell lysate(40ug) Lane2:HEK293T transfected with pEGFP-C3 whole cell lysate(10ug) Lane3:HEK293T transfected with pEGFP-C3-LC3B whole cell lysate(10ug)

Submit a product review to Biocompare.com

Submit a review of this product to Biocompare.com to receive a \$20 Amazon.com giftcard! Your reviews help your fellow scientists make the right decisions. Thank you for your contribution.



Anti-LC3 (T50) MAP1LC3B Antibody

For Research Use Only. Not for use in diagnostic procedures.