

Anti-Cofilin 1 (phospho-S3) CFL1 Antibody

Catalog Number: A01525S3-1

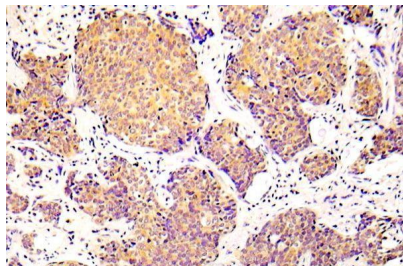
Overview

Product Name	Anti-Cofilin 1 (phospho-S3) CFL1 Antibody
Reactive Species	Human, Mouse, Rat
Description	Boster Bio Anti-Cofilin 1 (phospho-S3) CFL1 Antibody catalog # A01525S3-1. Tested in IHC applications. This antibody reacts with Human, Mouse, Rat.
Application	IHC
Clonality	Polyclonal
Formulation	Rabbit IgG, 1mg/ml in PBS with 0.02% sodium azide, 50% glycerol, pH7.2
Storage Instructions	Store at -20°C for one year. For short term storage and frequent use, store at 4°C for up to one month. Avoid repeated freeze-thaw cycles.
Host	Rabbit
Uniprot ID	P23528

Technical Details

Immunogen	Synthetic phosphopeptide derived from human Cofilin 1 around the phosphorylation site of Serine 3.
Cross Reactivity	No cross reactivity with other proteins.
Isotype	IgG
Form	Liquid
Concentration	1 mg/ml
Purification	The antibody was affinity-purified from rabbit antiserum by affinity-chromatography using epitope-specific immunogen and the purity is > 95% (by SDS-PAGE).
Suggested Dilutions	IHC: 1:50-1:200

Anti-Cofilin 1 (phospho-S3) CFL1 Antibody (A01525S3-1) Images



Immunohistochemistry (IHC) analyzes of p-COFLIN1 (S3) pAb in paraffin-embedded human lung adenocarcinoma tissue.

Submit a product review to [Biocompare.com](https://www.biocompare.com)

Submit a review of this product to [Biocompare.com](https://www.biocompare.com) to receive a \$20 Amazon.com giftcard! Your reviews help your fellow scientists make the right decisions. Thank you for your contribution.



Anti-Cofilin 1 (phospho-S3) CFL1 Antibody

For Research Use Only. Not for use in diagnostic procedures.