

Anti-CHD7 Antibody

Catalog Number: A01533

About CHD7

CHD proteins belong to a superfamily of proteins of ATP-dependent chromatin remodeling enzymes that have a unique combination of functional domains, including two N-terminal chromodomains, a SNF2-like ATPase/helicase domain and a DNA-binding domain. These proteins are thought to play a role in early embryonic development by affecting chromatin structure and gene expression. Mutations in one member of this family, CHD7, result in CHARGE syndrome. It colocalizes with embryonic stem (ES) cell master regulators OCT4/POU5F1, SOX2, and NANOG and is thought to modulate ES-specific gene transcription. Together with SOX2, CHD7 has been suggested to also regulate several human disease genes.

Overview

Product Name	Anti-CHD7 Antibody
Reactive Species	Human, Mouse
Description	Boster Bio Anti-CHD7 Antibody (Catalog # A01533). Tested in ELISA, WB, IHC-P, IF applications. This antibody reacts with Human, Mouse.
Application	ELISA, IF, IHC-P, WB
Clonality	Polyclonal
Formulation	CHD7 Antibody is supplied in PBS containing 0.02% sodium azide.
Storage Instructions	CHD7 antibody can be stored at 4°C for three months and -20°C, stable for up to one year. Avoid repeated freeze-thaw cycles. Antibodies should not be exposed to prolonged high temperatures.
Host	Rabbit
Uniprot ID	Q9P2D1

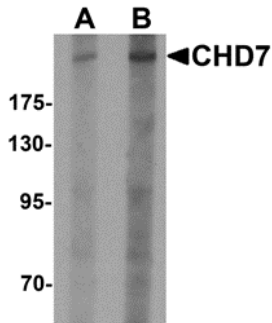
Technical Details

Immunogen	CHD7 antibody was raised against an 18 amino acid synthetic peptide near the amino terminus of human CHD7. The immunogen is located within amino acids 670 - 720 of CHD7.
Predicted Reactive Species	Bovine
Cross Reactivity	Multiple isoforms of CHD7 are known to exist.
Isotype	IgG
Form	Liquid
Concentration	1 mg/mL
Purification	CHD7 Antibody is affinity chromatography purified via peptide column.

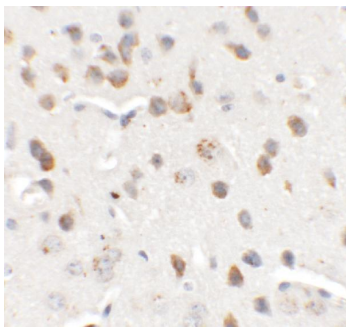
Suggested Dilutions

CHD7 antibody can be used for detection of CHD7 by Western blot at 1 - 2 ug/mL. Antibody can also be used for immunohistochemistry starting at 5 ug/mL. For immunofluorescence start at 20 ug/mL. Antibody validated: Western Blot in human samples; Immunohistochemistry in mouse samples and Immunofluorescence in mouse samples. All other applications and species not yet tested. Optimal dilutions for each application should be determined by the researcher.

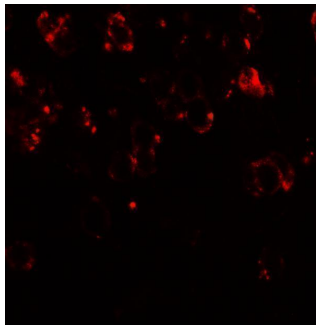
Anti-CHD7 Antibody (A01533) Images



Western blot analysis of CHD7 in SK-N-SH cell lysate with CHD7 antibody at (A) 1 and (B) 2 ug/mL.



Immunohistochemistry of CHD7 in mouse brain tissue with CHD7 antibody at 5 ug/mL.



Immunofluorescence of CHD7 in mouse brain tissue with CHD7 antibody at 20 ug/mL.

Submit a product review to [Biocompare.com](https://www.biocompare.com)

Submit a review of this product to [Biocompare.com](https://www.biocompare.com) to receive a \$20 Amazon.com giftcard! Your reviews help your fellow scientists make the right decisions. Thank you for your contribution.



Anti-CHD7 Antibody

For Research Use Only. Not for use in diagnostic procedures.