

## Anti-Toll-like receptor 8 TLR8 Antibody

Catalog Number: A01541-2

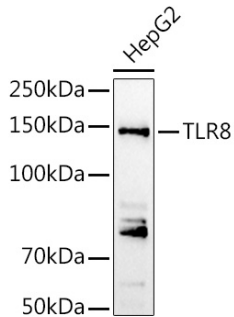
### Overview

Product Name	Anti-Toll-like receptor 8 TLR8 Antibody
Reactive Species	Human, Mouse, Rat
Description	Boster Bio Anti-Toll-like receptor 8 TLR8 Antibody catalog # A01541-2. Tested in WB,IHC,IF applications. This antibody reacts with Human,Mouse,Rat.
Application	IF, IHC, WB
Clonality	Polyclonal
Formulation	Rabbit IgG, 1mg/ml in PBS with 0.02% sodium azide, 50% glycerol, pH7.2
Storage Instructions	Store at -20°C for one year. For short term storage and frequent use, store at 4°C for up to one month. Avoid repeated freeze-thaw cycles.
Host	Rabbit
Uniprot ID	Q9NR97

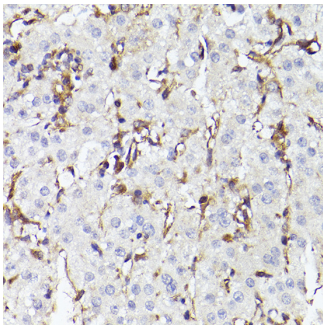
### Technical Details

Immunogen	Recombinant fusion protein containing a sequence corresponding to amino acids 849-1041 of human TLR8 (NP_619542.1).
Cross Reactivity	No cross reactivity with other proteins.
Isotype	IgG
Form	Liquid
Concentration	1 mg/ml
Purification	The antibody was affinity-purified from rabbit antiserum by affinity-chromatography using epitope-specific immunogen and the purity is > 95% (by SDS-PAGE).
Suggested Dilutions	WB: 1:500-1:2000 IHC/IF: 1:50-1:200

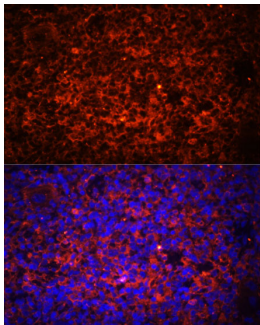
## Anti-Toll-like receptor 8 TLR8 Antibody (A01541-2) Images



Western blot analysis of lysates from HepG2 cells, using TLR8 pAb at 1:1000 dilution.



Immunohistochemistry analysis of paraffin-embedded human liver cancer using TLR8 pAb at dilution of 1:100 (40x lens).



Immunofluorescence analysis of paraffin-embedded rat spleen using TLR8 pAb at dilution of 1:100 (40x lens).

### Submit a product review to [Biocompare.com](https://www.biocompare.com)

Submit a review of this product to [Biocompare.com](https://www.biocompare.com) to receive a \$20 Amazon.com giftcard! Your reviews help your fellow scientists make the right decisions. Thank you for your contribution.



Anti-Toll-like receptor 8 TLR8 Antibody

For Research Use Only. Not for use in diagnostic procedures.