

Anti-Bim EL BCL2L11 Antibody

Catalog Number: A01552-2

About BCL2L11

Members in the Bcl-2 family are critical regulators of apoptosis by either inhibiting or promoting cell death. Bcl-2 homology 3 (BH3) domain is a potent death domain. BH3 domain containing pro-apoptotic proteins, including Bad, Bax, Bid, Bik, and Hrk, form a growing subclass of the Bcl-2 family. Bim, also known as Bcl-2-like protein 11, is a pro-apoptotic member of this family and interacts with diverse members in the pro-survival Bcl-2 sub-family including Bcl-2, Bcl-xL and Bcl-w. Multiple isoforms of Bim are known to exist, with Bim EL being the longest isoform (1,2).

Overview

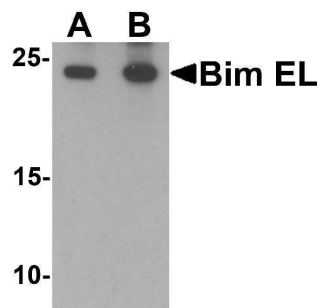
Product Name	Anti-Bim EL BCL2L11 Antibody
Reactive Species	Human, Mouse, Rat
Description	Boster Bio Anti-Bim EL BCL2L11 Antibody (Catalog # A01552-2). Tested in ELISA, WB, ICC, IF applications. This antibody reacts with Human, Mouse, Rat.
Application	ELISA, IF, ICC, WB
Clonality	Polyclonal
Formulation	Bim EL Antibody is supplied in PBS containing 0.02% sodium azide.
Storage Instructions	Bim EL antibody can be stored at 4°C for three months and -20°C, stable for up to one year.
Host	Rabbit
Uniprot ID	O43521

Technical Details

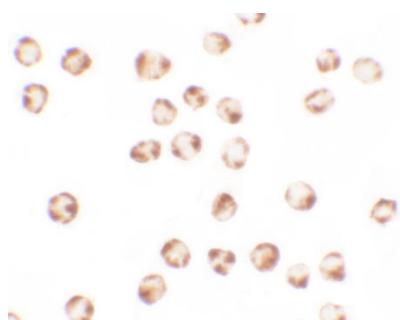
Immunogen	Bim EL antibody was raised against a peptide corresponding to 15 amino acids near the amino terminus of human Bim. The immunogen is located within amino acids 20 - 70 of Bim EL.
Predicted Reactive Species	Rat
Cross Reactivity	Bim EL antibody is human and mouse reactive. Multiple isoforms of Bim are known to exist; this antibody only detects the Bim EL isoform.
Isotype	IgG
Form	Liquid
Concentration	1 mg/mL
Purification	Bim EL Antibody is affinity chromatography purified via peptide column.
Suggested Dilutions	Bim EL antibody can be used for detection of Bim EL by Western blot at 1 - 2 ug/mL.

Antibody validated: Western Blot in human samples; Immunocytochemistry in human samples and Immunofluorescence in human samples. All other applications and species not yet tested. Optimal dilutions for each application should be determined by the researcher.

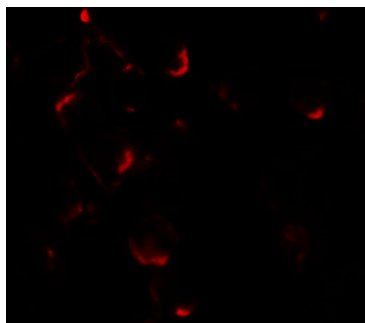
Anti-Bim EL BCL2L11 Antibody (A01552-2) Images



Western blot analysis of Bim in K562 cell lysate with Bim EL antibody at (A) 1 and (B) 2 ug/mL.



Immunocytochemistry of Bim EL in K562 cells with Bim EL antibody at 2.5 ug/ml.



Immunofluorescence of Bim EL in K562 cells with Bim EL antibody at 2.5 ug/ml.

Submit a product review to [Biocompare.com](https://www.biocompare.com)

Submit a review of this product to [Biocompare.com](https://www.biocompare.com) to receive a \$20 Amazon.com giftcard! Your reviews help your fellow scientists make the right decisions. Thank you for your contribution.



Anti-Bim EL BCL2L11 Antibody

For Research Use Only. Not for use in diagnostic procedures.