

Anti-BCL2L11 Antibody (Center)

Catalog Number: A01552-3

About BCL2L11

BCL2L11 belongs to the BCL-2 protein family. BCL-2 family members form hetero- or homodimers and act as anti- or pro-apoptotic regulators that are involved in a wide variety of cellular activities. This protein contains a Bcl-2 homology domain 3 (BH3). It has been shown to interact with other members of the BCL-2 protein family, including BCL2, BCL2L1/BCL-X(L), and MCL1, and to act as an apoptotic activator.

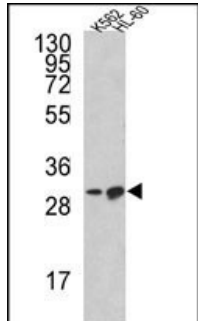
Overview

Product Name	Anti-BCL2L11 Antibody (Center)
Reactive Species	Human
Description	Boster Bio Anti-BCL2L11 Antibody (Center) (Catalog # A01552-3). Tested in IHC-P, Flow Cytometry, WB application(s). This antibody reacts with Human.
Application	Flow Cytometry, IHC-P, WB
Clonality	Polyclonal
Formulation	Purified polyclonal antibody supplied in PBS with 0.09% (W/V) sodium azide.
Storage Instructions	Maintain refrigerated at 2-8°C for up to 2 weeks. For long-term storage, store at -20°C in small aliquots to prevent freeze-thaw cycles.
Host	Rabbit
Uniprot ID	O43521

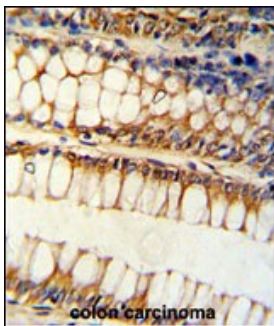
Technical Details

Immunogen	This BCL2L11 antibody is generated from rabbits immunized with a KLH conjugated synthetic peptide between 134-160 amino acids from the Central region of human BCL2L11.
Predicted Reactive Species	Mouse, Rat
Isotype	Rabbit IgG
Purification	This antibody is purified through a protein A column, followed by peptide affinity purification.
Suggested Dilutions	WB: 1:1000 IHC-P: 1:25 FC: 1:10-1:50

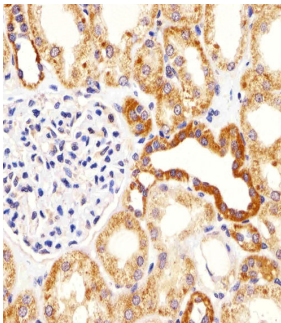
Anti-BCL2L11 Antibody (Center) (A01552-3) Images



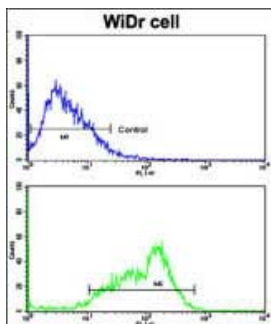
Western blot analysis of BCL2L11 Antibody (Center) in K562, HL-60 cell line lysates (35ug/lane). BCL2L11 (arrow) was detected using the purified Pab.



Formalin-fixed and paraffin-embedded human colon carcinoma reacted with BCL2L11 Antibody (Center), which was peroxidase-conjugated to the secondary antibody, followed by DAB staining. This data demonstrates the use of this antibody for immunohistochemistry; clinical relevance has not been evaluated.



Immunohistochemical analysis of paraffin-embedded H. kidney section using BCL2L11 Antibody (Center). A01552-3 was diluted at 1:25 dilution. A undiluted biotinylated goat polyvalent antibody was used as the secondary, followed by DAB staining.



Flow cytometric analysis of WiDr cells using BCL2L11 Antibody (Center)(bottom histogram) compared to a negative control cell (top histogram). FITC-conjugated goat-anti-rabbit secondary antibodies were used for the analysis.

Submit a product review to Biocompare.com

Submit a review of this product to Biocompare.com to receive a \$20 Amazon.com giftcard! Your reviews help your fellow scientists make the right decisions. Thank you for your contribution.



Anti-BCL2L11 Antibody (Center)

For Research Use Only. Not for use in diagnostic procedures.