

Anti-Phospho-Bim (S59) BCL2L11 Antibody

Catalog Number: A01552S59

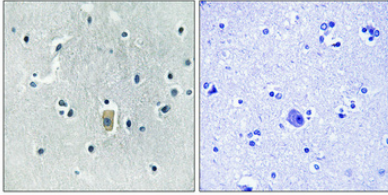
Overview

Product Name	Anti-Phospho-Bim (S59) BCL2L11 Antibody
Reactive Species	Human, Mouse, Rat
Description	Boster Bio Anti-Phospho-Bim (S59) BCL2L11 Antibody catalog # A01552S59. Tested in IHC, IF, ELISA applications. This antibody reacts with Human, Mouse, Rat.
Application	ELISA, IF, IHC
Clonality	Polyclonal
Formulation	Liquid in PBS containing 50% glycerol, 0.5% stabilizing protein and 0.02% sodium azide. *This antibody is supplied in a stabilized formulation. Compatibility with conjugation reactions depends on the chemistry of the conjugation method used. For conjugation methods that are not compatible with the stabilizing components present in this formulation, a carrier-free antibody format is required.
Storage Instructions	Store at -20°C for one year. For short term storage and frequent use, store at 4°C for up to one month. Avoid repeated freeze-thaw cycles.
Host	Rabbit
Uniprot ID	O43521

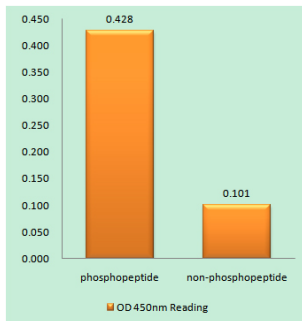
Technical Details

Immunogen	The antiserum was produced against synthesized peptide derived from human BIM around the phosphorylation site of Ser59. AA range:31-80
Cross Reactivity	No cross reactivity with other proteins.
Isotype	IgG
Form	Liquid
Concentration	1 mg/ml
Purification	The antibody was affinity-purified from rabbit antiserum by affinity-chromatography using epitope-specific immunogen.
Suggested Dilutions	IHC 1:100-1:300 ELISA 1:40000 IF 1:50-200

Anti-Phospho-Bim (S59) BCL2L11 Antibody (A01552S59) Images



Immunohistochemical analysis of paraffin-embedded Human brain. Antibody was diluted at 1:100 (4° overnight). High-pressure and temperature Tris-EDTA, pH8.0 was used for antigen retrieval. Negative control (right) obtained from antibody was pre-absorbed by immunogen peptide.



Enzyme-Linked Immunosorbent Assay (Phospho-ELISA) for Immunogen Phosphopeptide (Phospho-left) and Non-Phosphopeptide (Phospho-right), using BIM (Phospho-Ser59) Antibody

Submit a product review to Biocompare.com

Submit a review of this product to Biocompare.com to receive a \$20 Amazon.com giftcard! Your reviews help your fellow scientists make the right decisions. Thank you for your contribution.



Anti-Phospho-Bim (S59) BCL2L11 Antibody

For Research Use Only. Not for use in diagnostic procedures.